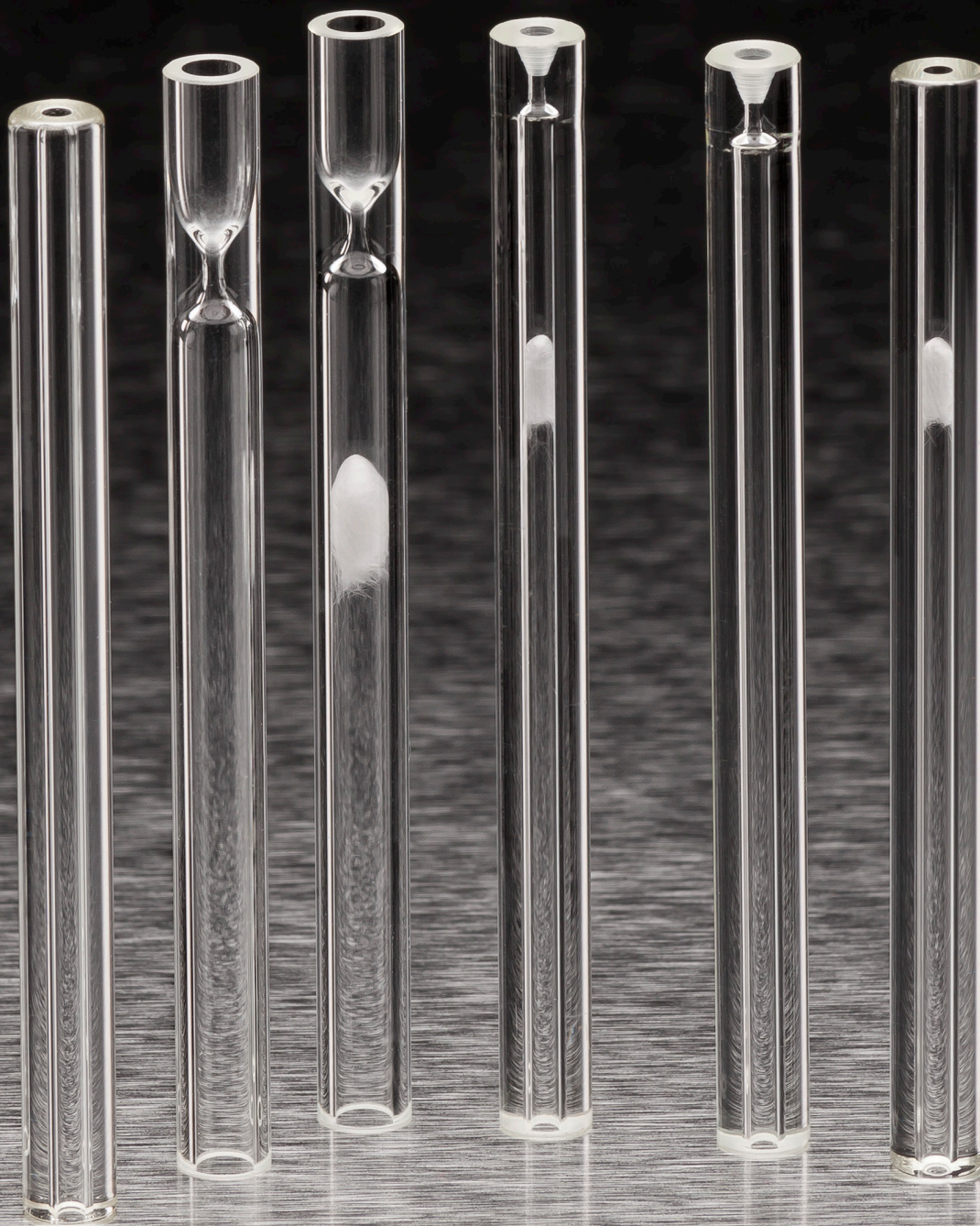




A WIDE SELECTION OF INLET LINERS FOR GAS CHROMATOGRAPHS

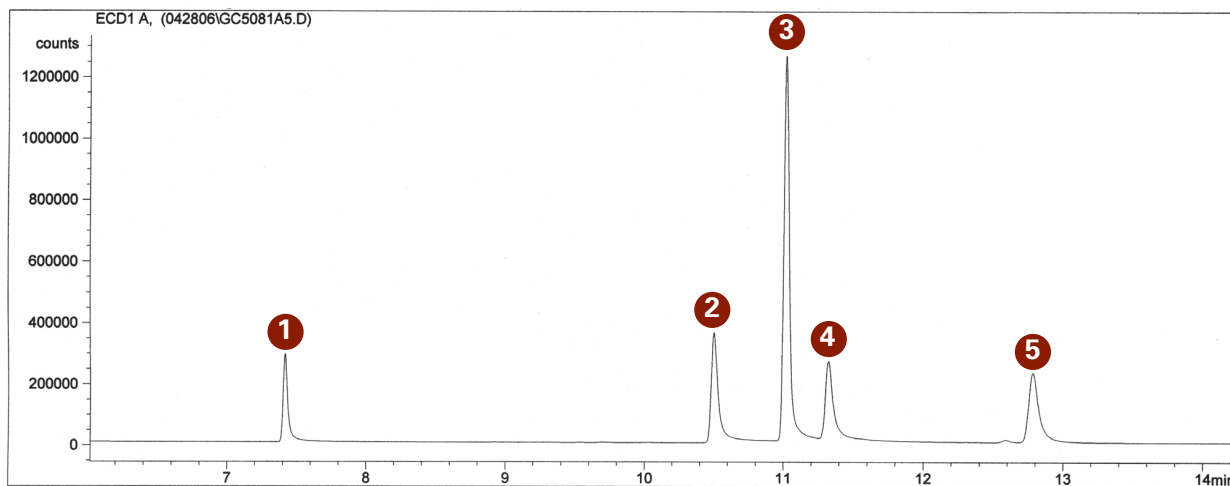
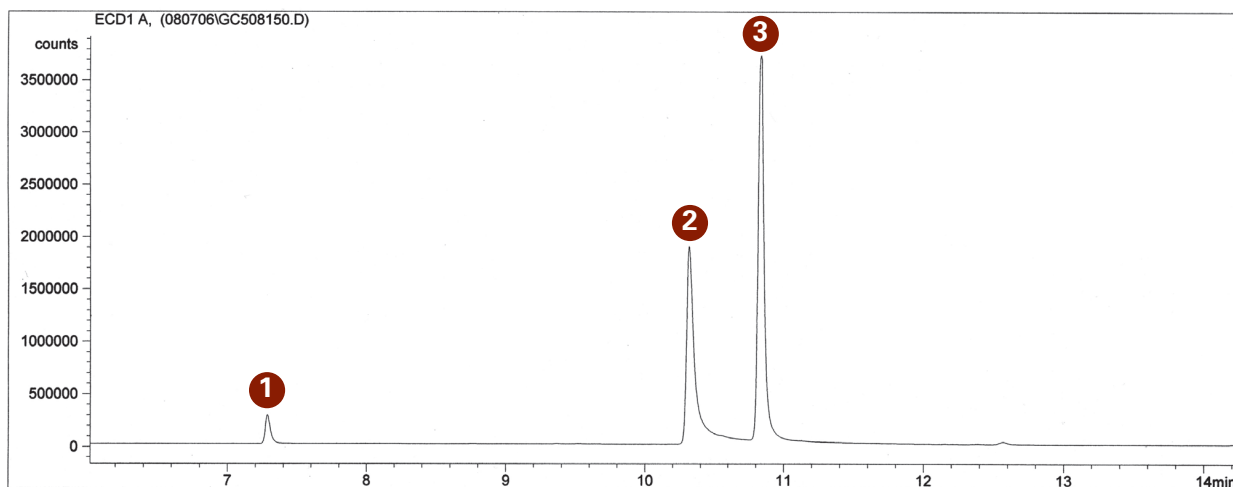


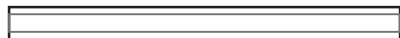
GC LINERS

Confirming Peaks

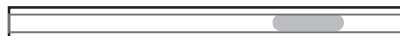
1 Pentachloronitrobenzene (IS)	4 Endrin Aldehyde
2 Endrin	5 Endrin Ketone
3 4, 4' DDT	* 4, 4' DDD
	* 4, 4' DDE

* Showed no breakdown from 4, 4' DDT in pesticide breakdown standard.

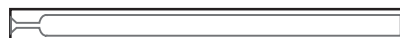
Before Silanization
(Not Deactivated)After Silanization / Post 50 Injections
(Deactivated)



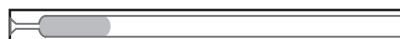
2mm Straight Splitless
2.0mm ID x 6.5mm OD x 78.5mm
Instrument: Agilent Part Number 5181-8818



2mm Straight Splitless with Deactivated Glass Wool
2.0mm ID x 6.5mm OD x 78.5mm
Instrument: Agilent Part Number 5181-8818



2mm Splitless Gooseneck
2.0mm ID x 6.5mm OD x 78.5mm
Instrument: Agilent



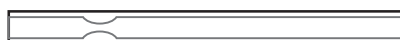
2mm Splitless Gooseneck with Deactivated Glass Wool
2.0mm ID x 6.5mm OD x 78.5mm
Instrument: Agilent



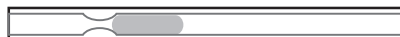
4mm Straight Splitless
4.0mm ID x 6.5mm OD x 78.5mm
Instrument: Agilent Part Number 210-3003



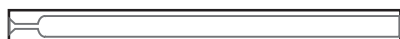
4mm Straight Splitless with Deactivated Glass Wool
4.0mm ID x 6.5mm OD x 78.5mm
Instrument: Agilent Part Number 19251-60540



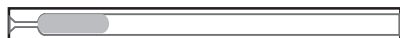
4mm Splitless Recessed Gooseneck
4.0mm ID x 6.5mm OD x 78.5mm
Instrument: Agilent



4mm Splitless Recessed Gooseneck with Deactivated Glass Wool
4.0mm ID x 6.5mm OD x 78.5mm
Instrument: Agilent



4mm Splitless Gooseneck
4.0mm ID x 6.5mm OD x 78.5mm
Instrument: Agilent Part Number 5181-3316



4mm Splitless Gooseneck with Deactivated Glass Wool
4.0mm ID x 6.5mm OD x 78.5mm
Instrument: Agilent Part Number 5062-3587