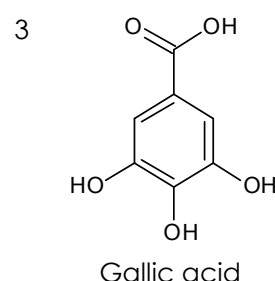
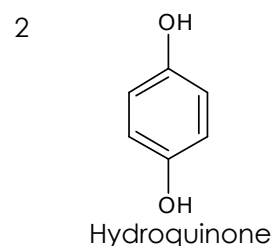
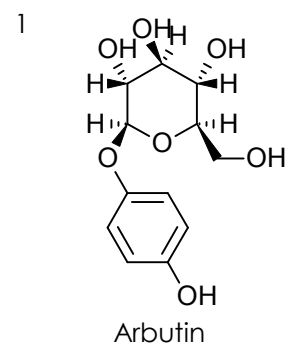
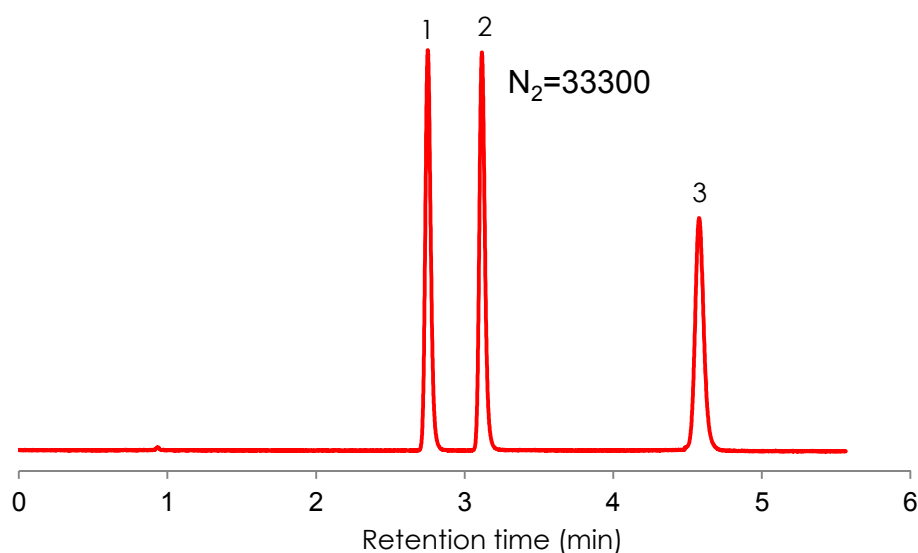


アルブチンとその関連物質の分離

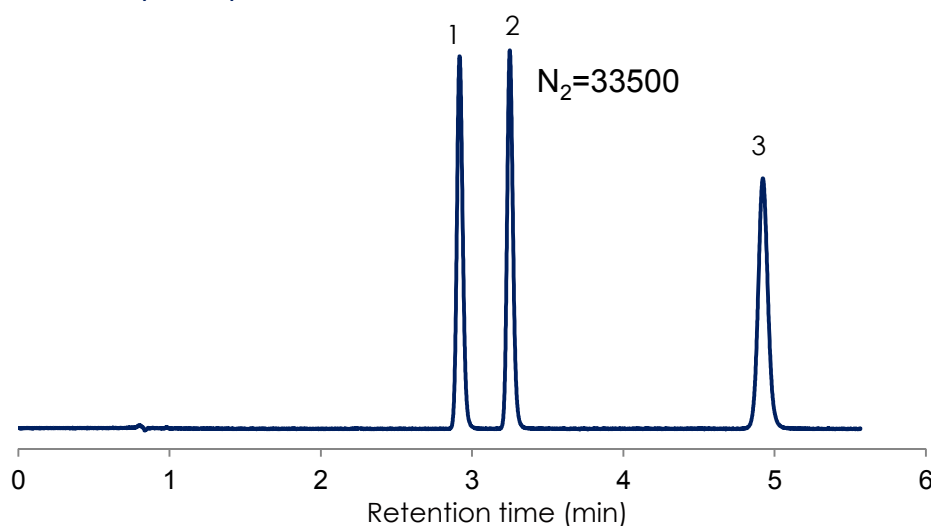
Arbutin and related substances

SunShell RP-AQUA 2.6 μ m,
150 x 4.6 mm i.d.

10 mM formic acid/ methanol = 97/3



10 mM phosphoric acid/methanol = 97/3



Column: SunShell RP-AQUA, 2.6 μ m 150 x 4.6 mm

Mobile phase: 10 mM formic acid/ methanol = 97/3 or

10 mM phosphoric acid/methanol = 97/3

Flow rate: 1.5 mL/min

Temperature: Ambient

Detection: UV@280 nm

Sample: 1 = Arbutin, 2 = Hydroquinone, 3 = Gallic acid