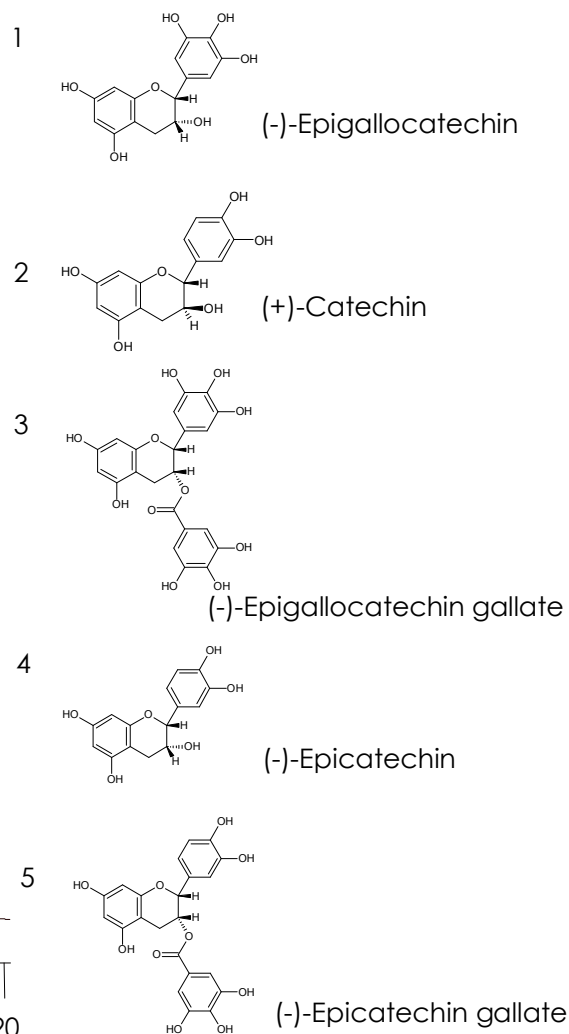
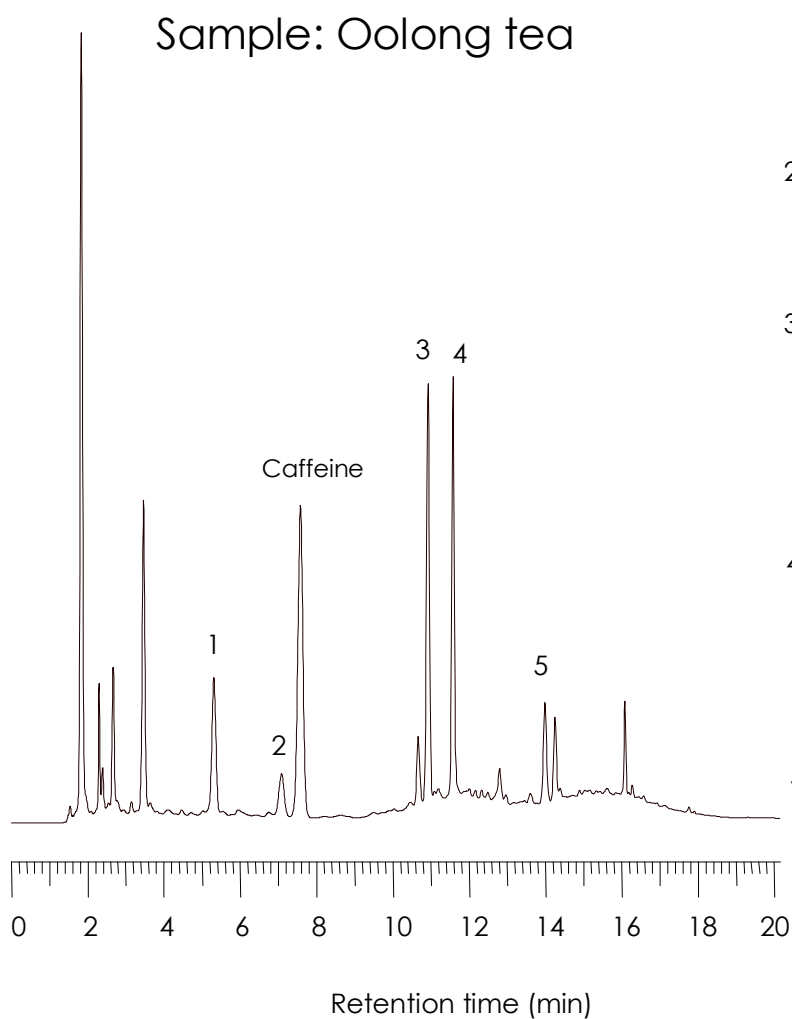


カテキン類

Catechins

Sunniest C18 5 μ m, 150 x 4.6 mm i.d.



Column: Sunniest C18 5 μ m, 150 x 4.6 mm i.d.

Mobile phase: A) H₂O/CH₃CN/85% H₃PO₄ (95:5:0.05)

B) H₂O/CH₃CN/85% H₃PO₄ (50:50:0.05)

Time (min)	0	5	8	10	15	20
%B	10	10	30	30	80	80

Flow rate: 1.0 mL/min

Temperature: 40 °C

Detection: UV@230 nm

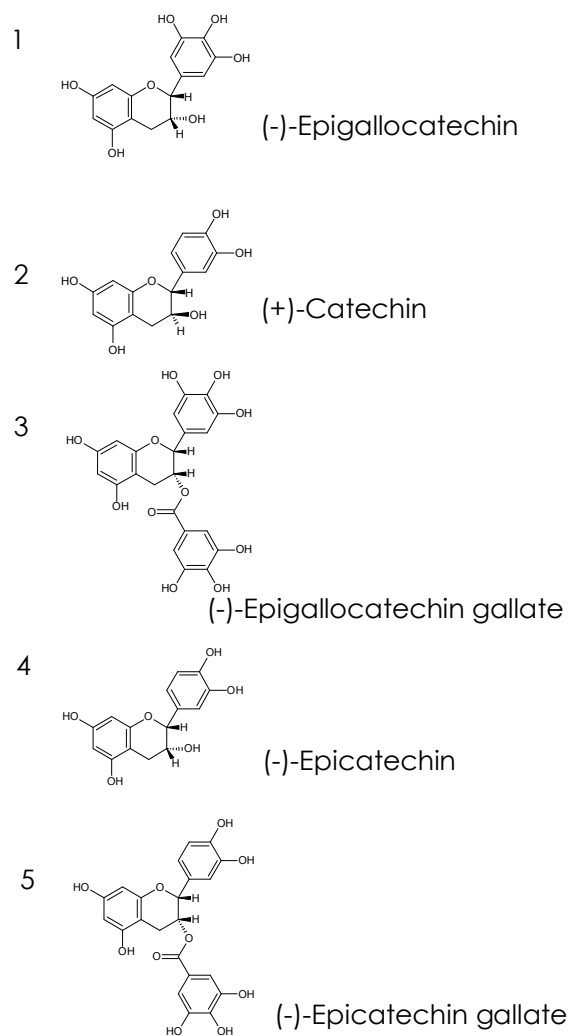
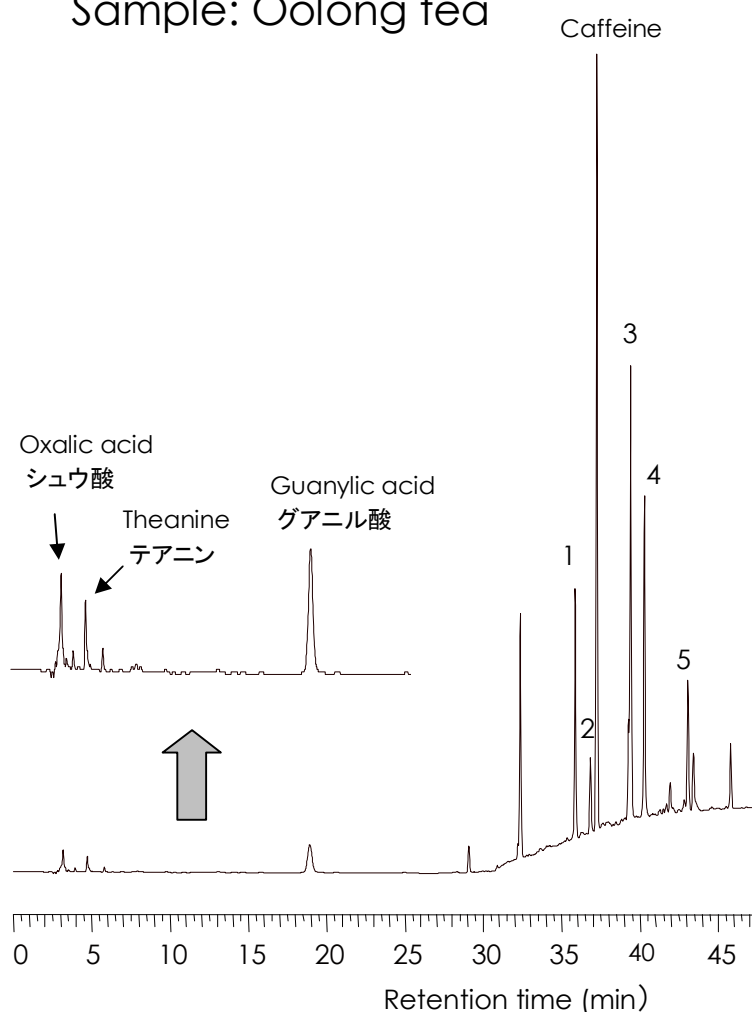
Injection volume: 10 μ L

カテキン類 II

Catechins II

Sunniest RP-AQUA 5 μ m, 150 x 4.6 mm i.d.

Sample: Oolong tea



Column: Sunniest RP-AQUA 5 μ m, 250 x 4.6 mm i.d.

Mobile phase: A) H₂O/H₃PO₄ (99.9:0.1)

B) CH₃CN

Time (min)	0	20	60
%B	0	0	50

Flow rate: 1.0 mL/min

Temperature: 40 °C

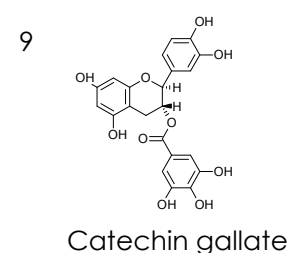
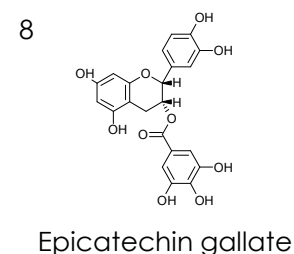
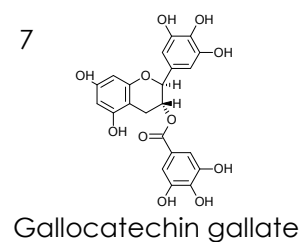
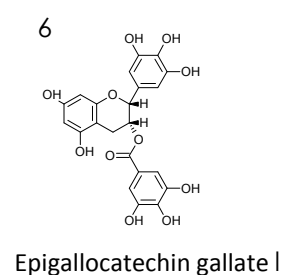
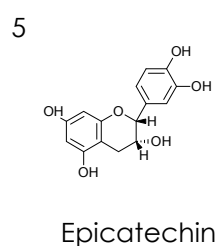
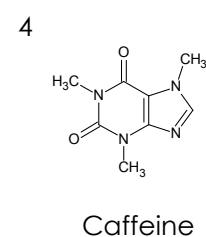
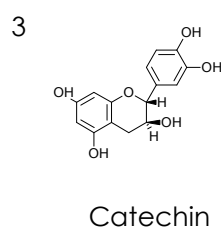
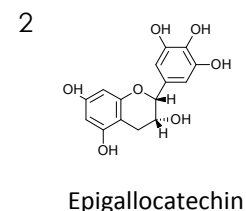
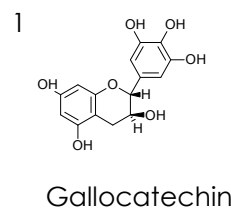
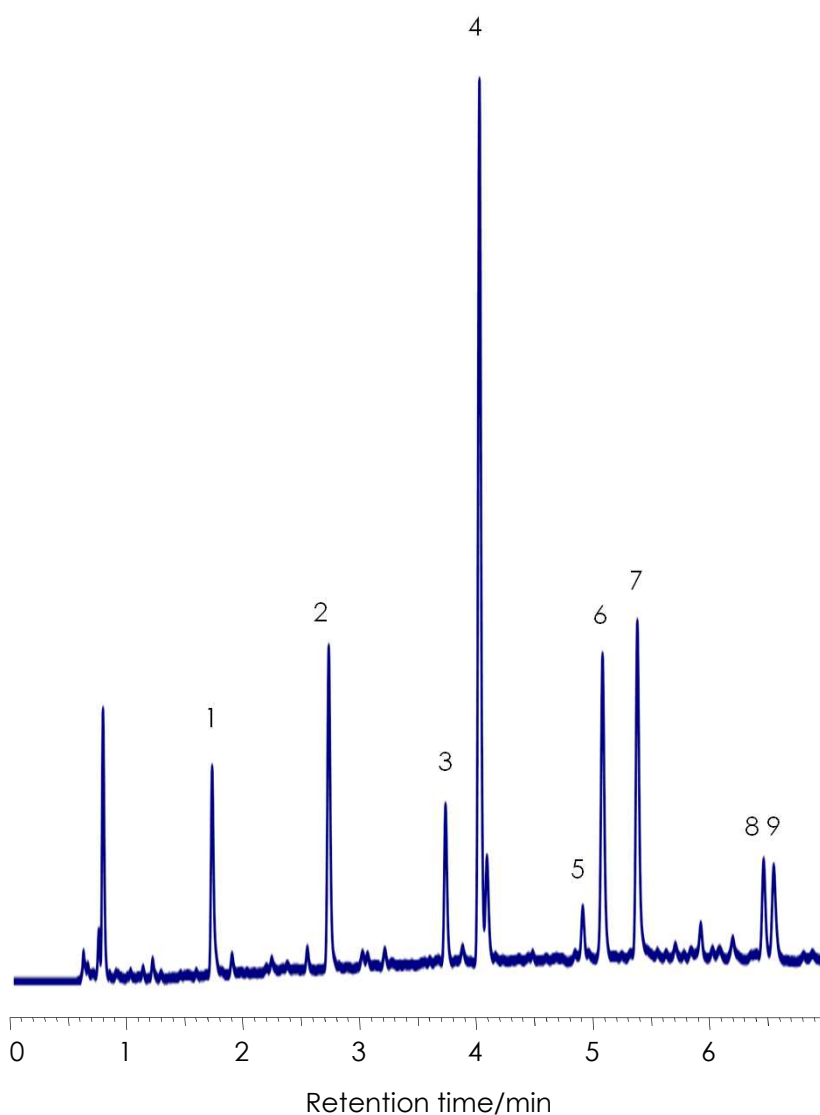
Detection: UV@210 nm

Injection volume: 10 μ L

ウーロン茶の分離

Oolong tea

SunShell C18 2.6 μm, 75 x 4.6 mm i.d.



Column: SunShell C18 2.6 μm, 75 x 4.6 mm

Mobile phase:

A) 0.1% Phosphoric acid

B) CH₃CN

Gradient program

Time	0 min	7.5 min	10 min
%B	2%	25%	25%

Flow rate: 1.0 mL/min,

Temperature: 25 °C

Detection: UV@250 nm

Sample: Oolong tea