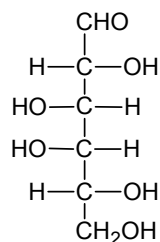


## トリプトファン誘導体化単糖の分離

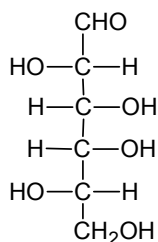
### Monosaccharides derivatized with L-Tryptophan

SunShell RP-AQUA 2.6  $\mu$ m,  
100 x 4.6 mm i.d.

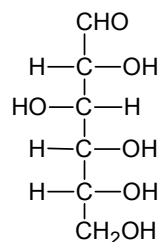
1 D-Galactose



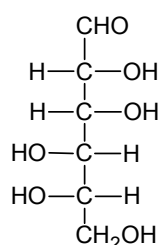
2 L-Galactose



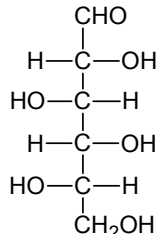
3 D-Glucose



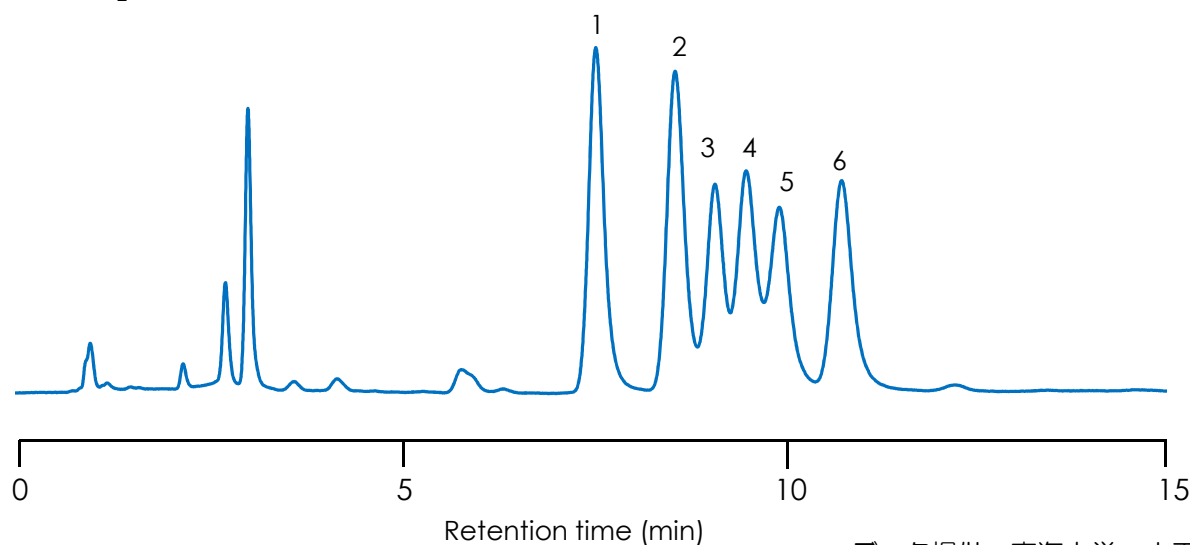
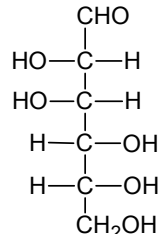
4 L-Mannose



5 L-Glucose



6 D-Mannose



データ提供：東海大学 小玉修嗣先生

Column: SunShell RP-AQUA, 2.6  $\mu$ m 100 x 4.6 mm

Mobile phase: 5 mM Phosphate and 25 mM tetraborate (pH 9.6)

Flow rate: 1.0 mL/min

Temperature: 20  $^{\circ}$ C

Detection: UV@220 nm

Sample: Monosaccharides derivatized with L-Tryptophan