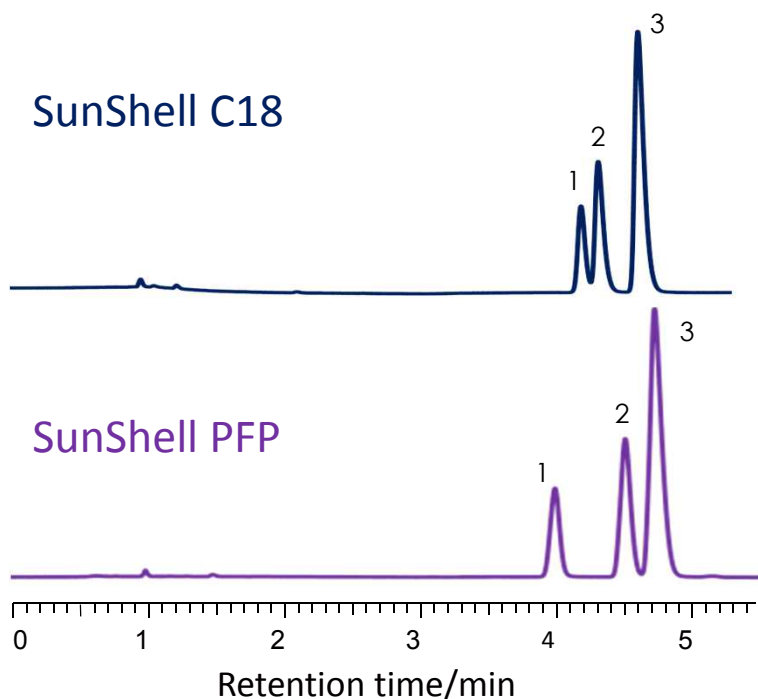


## 異性体の分離 (キシレン、クレゾール)

### Isomers (ortho, meta and para) of xylene and cresol

SunShell PFP 2.6  $\mu$ m, 150 x 4.6 mm i.d.



Column:

SunShell C18, 2.6 mm 150 x 4.6 mm

SunShell PFP, 2.7 mm 150 x 4.6 mm

Mobile phase:

CH<sub>3</sub>OH/water=75:25 for SunShell C18

CH<sub>3</sub>OH/water=60:40 for SunShell PFP

Flow rate: 0.3 mL/min

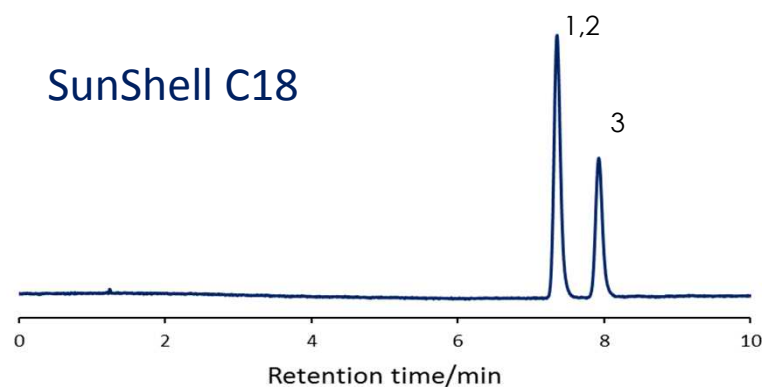
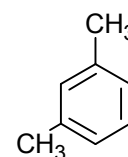
Temperature: 25 °C

Detection: UV@250nm

Sample: 1 = o-Xylene

2 = m-Xylene

3 = p-Xylene



Column:

SunShell C18, 2.6 mm 150 x 4.6 mm

SunShell PFP, 2.7 mm 150 x 4.6 mm

Mobile phase: CH<sub>3</sub>OH/H<sub>2</sub>O=40/60

Flow rate: 1.0 mL/min

Temperature: 25 °C

Detection: UV@250nm

Sample: 1 = p-Cresol

2 = m-Cresol

3 = o-Cresol

