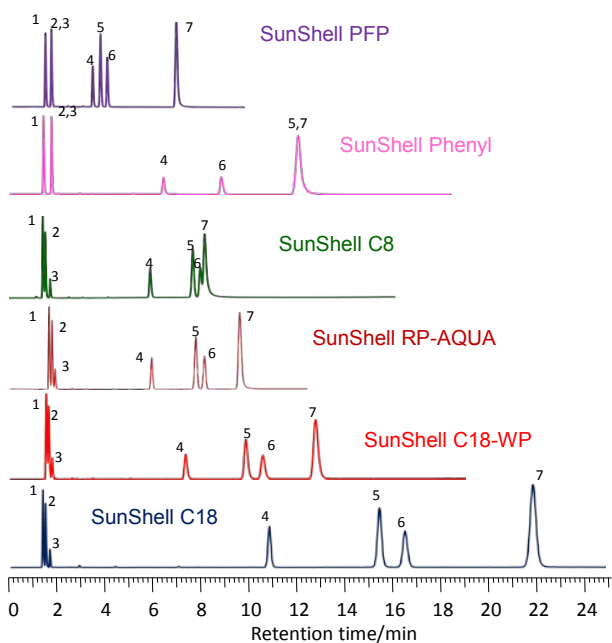




ULTIMATE SELECTIVITY FOR YOUR ANALYSIS

C18-WP / RP-AQUA / C8 / PHENYL / PFP - 2.6 μm



Column: SunShell C18, C18-WP, RP-AQUA, C8, Phenyl, PFP, 2.6 μm

150 x 4.6 mm

Mobile phase: CH₃OH/H₂O=75/25

Flow rate: 1.0 mL/min

Temperature: 40° C

Sample: 1 = Uracil

2 = Caffeine

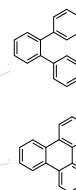
3 = Phenol

4 = Butylbenzene

5 = o-Terphenyl

6 = Amylbenzene

7 = Triphenylene



	Hydrogen bonding	Hydrophobicity	Steric selectivity
PFP	1.00	1.31	2.38
Phenyl	1.00	1.48	1.01
C8	0.32	1.46	1.08
RP-AQUA	0.52	1.52	1.30
C18-WP	0.40	1.55	1.35
Sunshell C18	0.39	1.60	1.46

C18 -WP / RP-AQUA / C8 / PHENYL / PFP - 2.6 μ m

.....

ORDERING INFO OF SUNSHELL	Inner diameter (mm)	1.0	2.1	3.0	4.6	USP category
	Length (mm)	Catalog no	Catalog no	Catalog no	Catalog no	Catalog no
Sunshell C8, 2.6 μ m	30	---	CC6931	CC6331	CC6431	L7
	50	---	CC6941	CC6341	CC6441	
	75	---	CC6951	CC6351	CC6451	
	100	---	CC6961	CC6361	CC6461	
	150	---	CC6971	CC6371	CC6471	
Sunshell PFP, 2.6 μ m	30	---	CF6931	CF6331	CF6431	L43
	50	---	CF6941	CF6341	CF6441	
	75	---	CF6951	CF6351	CF6451	
	100	---	CF6961	CF6361	CF6461	
	150	---	CF6971	CF6371	CF6471	
Sunshell C18-WP, 2.6 μ m	30	---	CW6931	CW6331	CW6431	L1
	50	---	CW6941	CW6341	CW6441	
	75	---	CW6951	CW6351	CW6451	
	100	---	CW6961	CW6361	CW6461	
	150	---	CW6971	CW6371	CW6471	
Sunshell RP-AQUA, 2.6 μ m	30	---	CR6931	CR6331	CR6431	Equivalent to L62
	50	CR6141	CR6941	CR6341	CR6441	
	75	---	CR6951	CR6351	CR6451	
	100	CR6161	CR6961	CR6361	CR6461	
	150	CR6171	CR6971	CR6371	CR6471	
Sunshell Phenyl, 2.6 μ m	30	---	CP6931	CP6331	CP6431	L11
	50	---	CP6941	CP6341	CP6441	
	75	---	CP6951	CP6351	CP6451	
	100	---	CP6961	CP6361	CP6461	
	150	---	CP6971	CP6371	CP6471	