



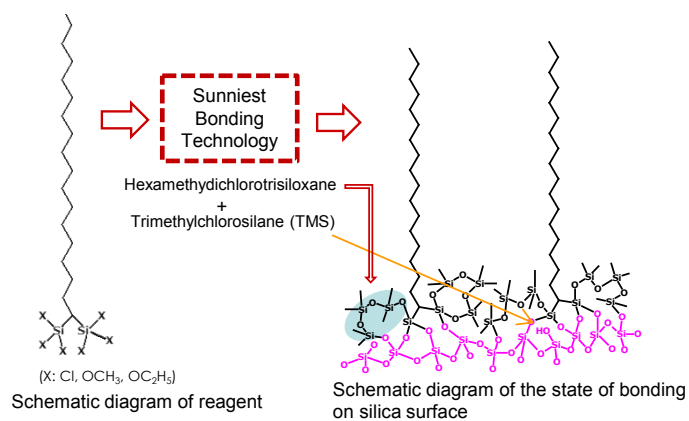
HFC18 - 16 / HFC18 - 30 - 2.6 μm

.....

High speed separations of proteins and peptides.

What is HFC18? Hexa-Functional C18 has six functional groups.

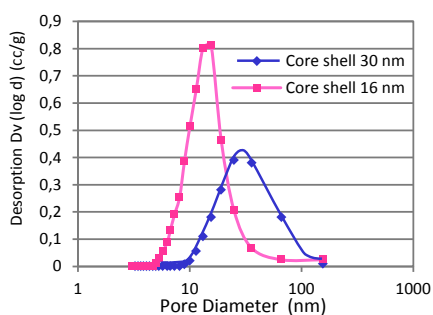
The HFC18 is much more stable under acidic conditions.



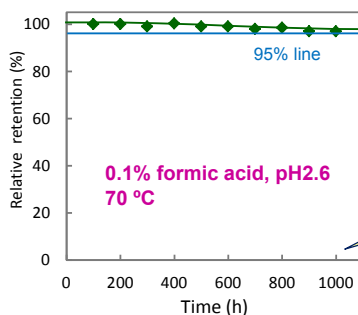
Proteins/peptides are often analysed at acidic pH. The wide pore SunShell phases are optimized for superior life time at extreme conditions.

HFC18 - 16 / HFC18 - 30 - 2.6 μm

.....



Pore distribution of core shell particle



Durable test condition
 Column : SunShell HFC18-16 2.6 μm, 50 x 2.1 mm
 Mobile phase:
 CH₃CN/0.1% formic acid, pH2.6=40/60
 Flow rate: 0.4 mL/min
 Temperature: 70 °C

More than 1000 hours

Measurement condition
 Mobile phase: CH₃CN/H₂O=60/40
 Flow rate: 0.4 mL/min
 Temperature: 40 °C
 Sample: 1 = Uracil
 2 = Butylbenzene

Stability under LC/MS mobile phase condition

ORDERING INFO OF SUNSHELL	Inner diameter (mm)	1.0	2.1	3.0	4.6	USP category
	Length (mm)	Catalog no	Catalog no	Catalog no	Catalog no	Catalog no
Sunshell HFC18-16, 2.6 μm	50	---	CG6941	CG6341	CG6441	L1
	100	---	CG6961	CB6361	CG6461	
	150	---	CG6971	CB6371	CB6471	
Sunshell HFC18-30, 2.6 μm	50	---	C46941	C46341	C46441	L1
	100	---	C46961	C46361	C46461	
	150	---	C46971	C46371	C46471	