

# DAISO GEL

## APS-P Series

DAISO GEL C4-P Series  
DAISO GEL C1-P Series  
DAISO GEL APS-P Series  
DAISO GEL SP-P Series  
DAISO GEL SWP Series

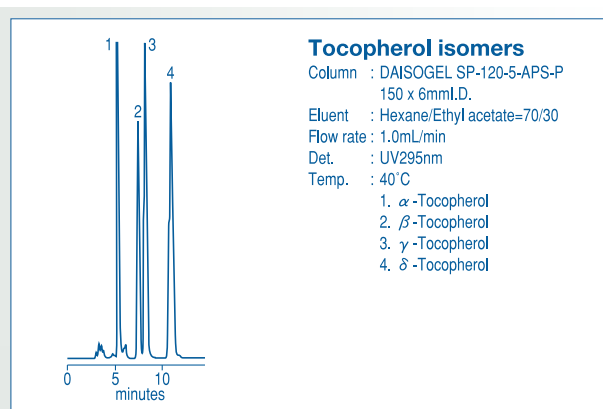
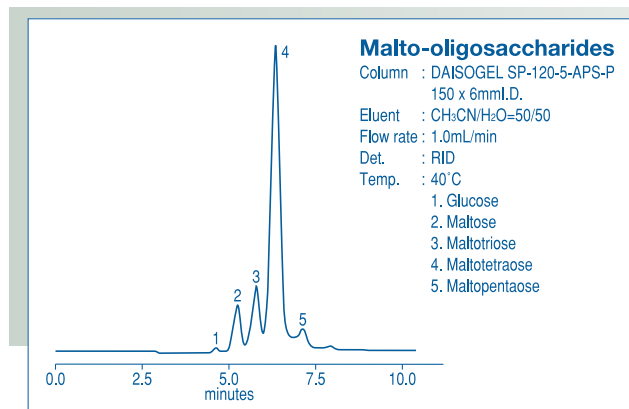
\* Useful in both normal and reversed phase

\* Useful as a support of special modification

\* Recommended for basic compounds separation

DAISO GEL APS-P packing materials are bonded with amino-propyl silane using our ultra pure spherical silica gel as base material. Depending on the choice of the eluent, it can both be used under normal and reversed phase mode. Especially, it is useful for saccharide separation using acetonitrile/water. The phase is also recommended for the separation of basic compounds under normal phase conditions, which could not be separated using unmodified silica gel. Simple eluents such as hexane / ethyl acetate or chloroform / methanol are used for the separation without any polar solvent additives.

### Applications



### Product names and properties

Analytical Grades	Pore Size (nm)	Particle Size (μm)	Pore Volume (ml/g)	Surface Area (m <sup>2</sup> /g)	% of Carbon	Minimum Lot (g)
SP-60-3-APS-P	6	3	0.75	450	5	50
SP-60-5-APS-P	6	5	0.75	450	5	50
SP-120-3-APS-P	12	3	1.0	300	4	50
SP-120-5-APS-P	12	5	1.0	300	4	50
SP-200-3-APS-P	20	3	1.1	200	3	50
SP-200-5-APS-P	20	5	1.1	200	3	50
SP-300-3-APS-P	30	3	0.9	100	2	50
SP-300-5-APS-P	30	5	0.9	100	2	50

Preparative Grades	Pore Size (nm)	Particle Size (μm)	Pore Volume (ml/g)	Surface Area (m <sup>2</sup> /g)	% of Carbon	Minimum Lot (g)
SP-60-10-APS-P	6	10	0.75	450	5	500
SP-60-15-APS-P	6	15	0.75	450	5	500
SP-60-20-APS-P	6	20	0.75	450	5	500
SP-60-40/60-APS	6	50	0.75	450	5	500
SP-120-10-APS-P	12	10	1.0	300	4	500
SP-120-15-APS-P	12	15	1.0	300	4	500
SP-120-20-APS-P	12	20	1.0	300	4	500
SP-120-40/60-APS	12	50	1.0	300	4	500
SP-200-10-APS-P	20	10	1.1	200	3	500
SP-200-15-APS-P	20	15	1.1	200	3	500
SP-200-20-APS-P	20	20	1.1	200	3	500
SP-200-40/60-APS	20	50	1.1	200	3	500
SP-300-10-APS-P	30	10	0.9	100	2	500
SP-300-15-APS-P	30	15	0.9	100	2	500
SP-300-20-APS-P	30	20	0.9	100	2	500
SP-300-40/60-APS	30	50	0.9	100	2	500