

All dimensions and lengths available for micro bore 1.0 mm, semi-preparative, preparative, specialty sizes, and threaded modular column, please refer to page 5.

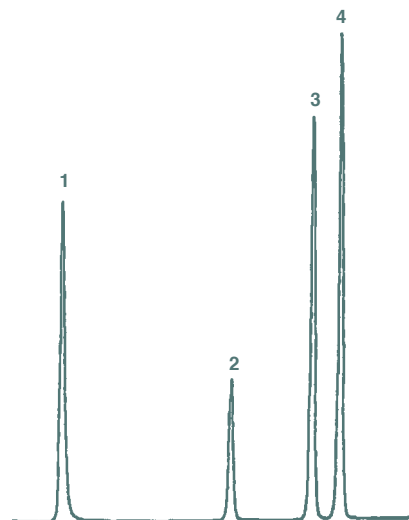
AquaSep

- Chromatograph polar compounds with pure aqueous mobile phases
- Rapid re-equilibration with gradients
- No ion-pairing reagents required for highly polar compounds
- Extremely high carbon load

AquaSep has been developed using patented technology for use with highly aqueous mobile phases, including 100% aqueous. Our patented bonding chemistry allows the bonded C8 chains to remain fully extended in the mobile phase even under highly aqueous conditions. To obtain high aqueous stability and maximum hydrophobic interaction AquaSep relies on a specially developed silane which is bonded to ultra high purity synthetically produced spherical silica. This silane contains an ether linkage placed near the point of attachment to the silica base particle. This ether group is polar enough to allow

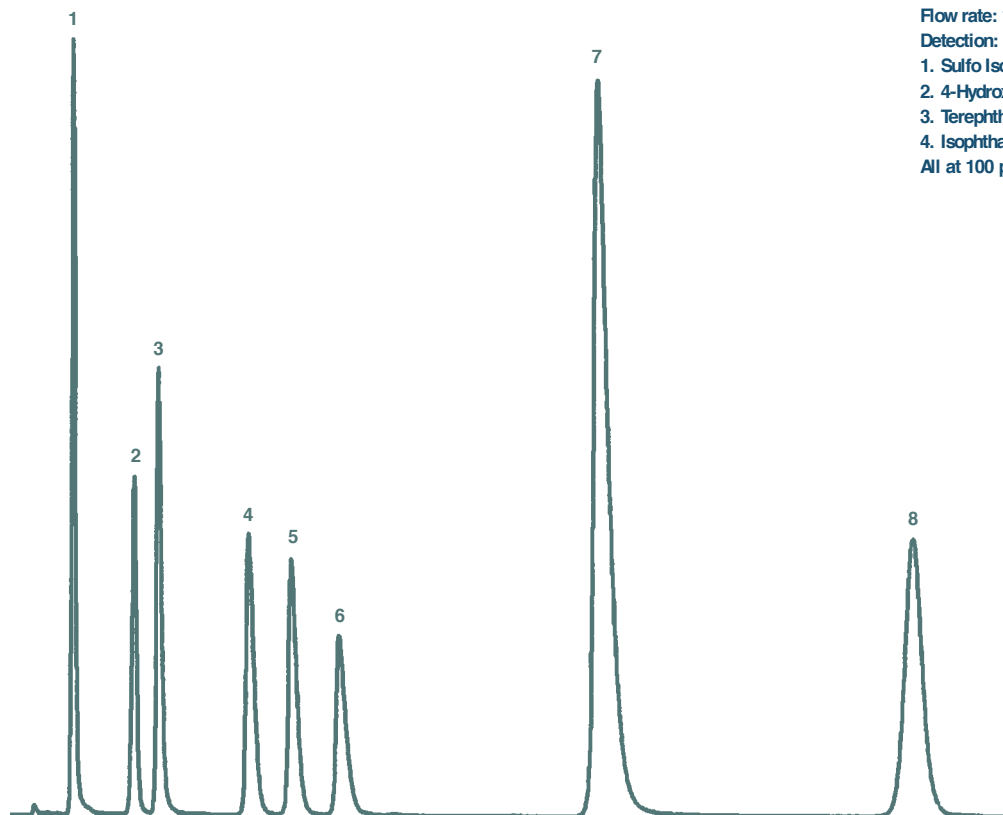
water to penetrate and hydrate the silica surface preventing the self association of the hydrophobic C8 chains. This layer of hydration permits the maximum interaction of the C8 chains with the analytes of interest and prevents any phase collapse. AquaSep can retain highly water soluble compounds such as small organic acids, water soluble vitamins and low molecular weight polar compounds. It can eliminate the need for ion-pairing reagents.

AquaSep: pore size = 100° A;
surface area = 450 m²/gram;
Carbon = 16%; pH range 2-8



Aromatic Acids

Column: AquaSep 150 x 4.6 mm
Eluent: Gradient 0% to 45%B in 30 minutes,
A= 0.08% Phosphoric acid in water, B=Acetonitrile
Flow rate: 1.5 mL/min.
Detection: UV @ 225 nm
1. Sulfo Isophthalic Acid
2. 4-Hydroxybenzoic Acid
3. Terephthalic Acid
4. Isophthalic Acid
All at 100 ppm each

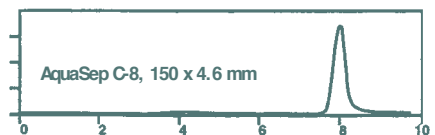
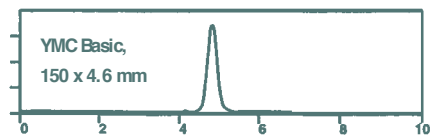
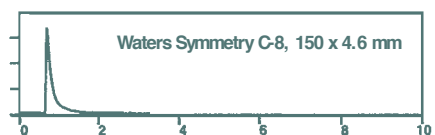
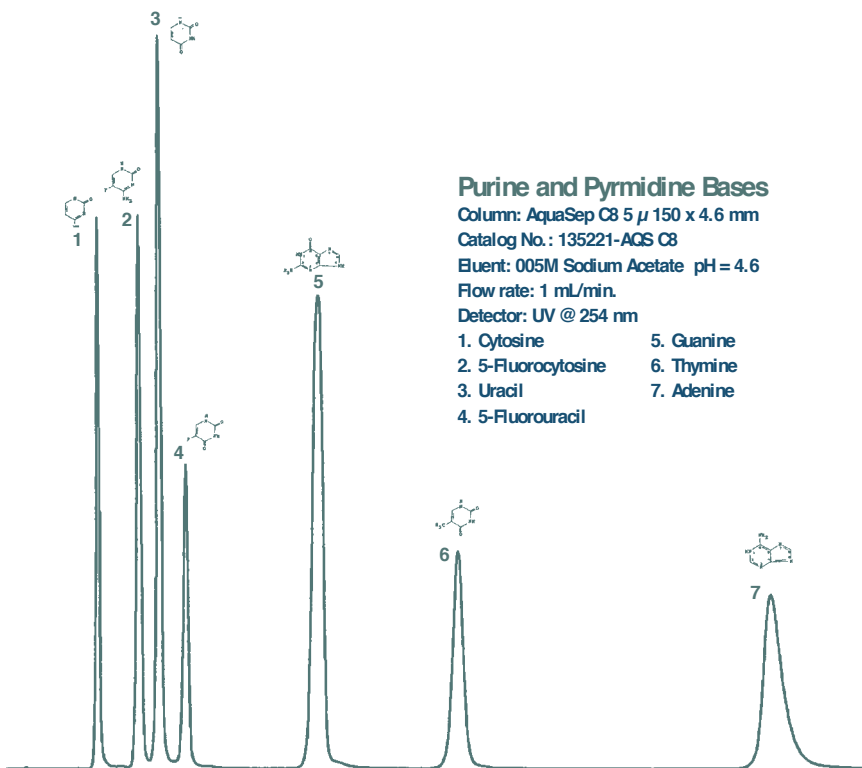


Organic Acids

Column: AquaSep C8 5 μ 250 x 4.6mm
Catalog No.: 155221-AGS C8
Eluent: 0.05M KH₂PO₄ pH = 2.4
Flow rate: 1 mL/min.
Detector: UV @ 210 nm

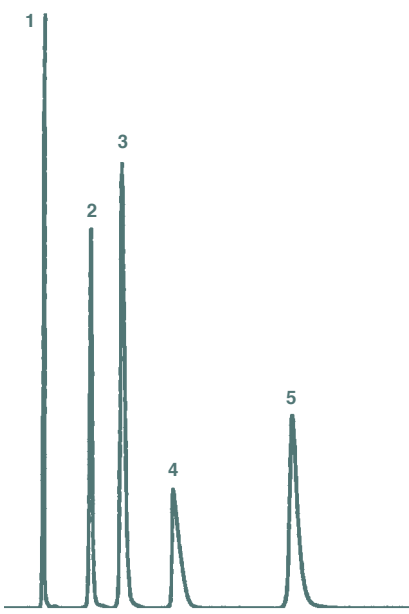
- | | |
|------------------|-----------------|
| 1. Oxalic acid | 5. Malonic acid |
| 2. Tartaric acid | 6. Lactic acid |
| 3. Formic acid | 7. Maleic acid |
| 4. Malic acid | 8. Fumaric acid |

AquaSep



Thiamine

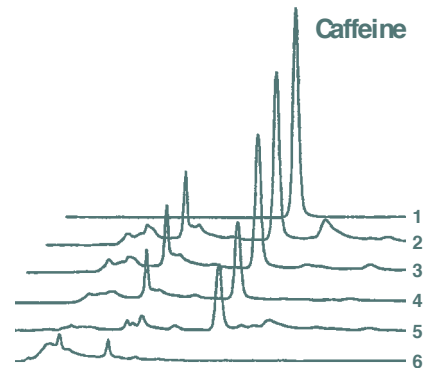
Column: AquaSep C8 5 μ 150 x 4.6 mm
 Catalog No.: 135221-AQS C8
 Eluent: 0.1% Acetic Acid
 Flow rate: 1 mL/min.
 Detector: UV @ 254 nm



Brewed Tea (Injected neat)

Column: AquaSep 150 x 4.6 mm
 Eluent: 20:80 Acetonitrile: Water pH 3 Phosphate buffer
 Flow rate: 1 mL/min.
 Detector: UV @ 254 nm

- Caffeine Standard 400 ug/mL
- Darjeeling Loose Tea
- "Lipton"
- Celestial Seasonings "Morning Thunder"
- Bancha Eden "Green Tea"
- Celestial Seasonings Herbal Tea "Red Zinger"



Description	Particle Size (μ)	Length (mm)	Standard-bore P/N (4.6 mm)	Standard-bore P/N (4.0 mm)	Small-bore P/N (3.2 mm)	Small-bore P/N (2.0 mm)
AquaSep	5	50	115221-AQS	114221-AQS	11d221-AQS	112221-AQS
AquaSep	5	100	125221-AQS	124221-AQS	12d221-AQS	122221-AQS
AquaSep	5	150	135221-AQS	134221-AQS	13d221-AQS	132221-AQS
AquaSep	5	250	155221-AQS	135221-AQS	15d221-AQS	152221-AQS