

All dimensions and lengths available for micro bore 1.0 mm, semi-preparative, preparative, specialty sizes, and threaded modular column, please refer to page 5.

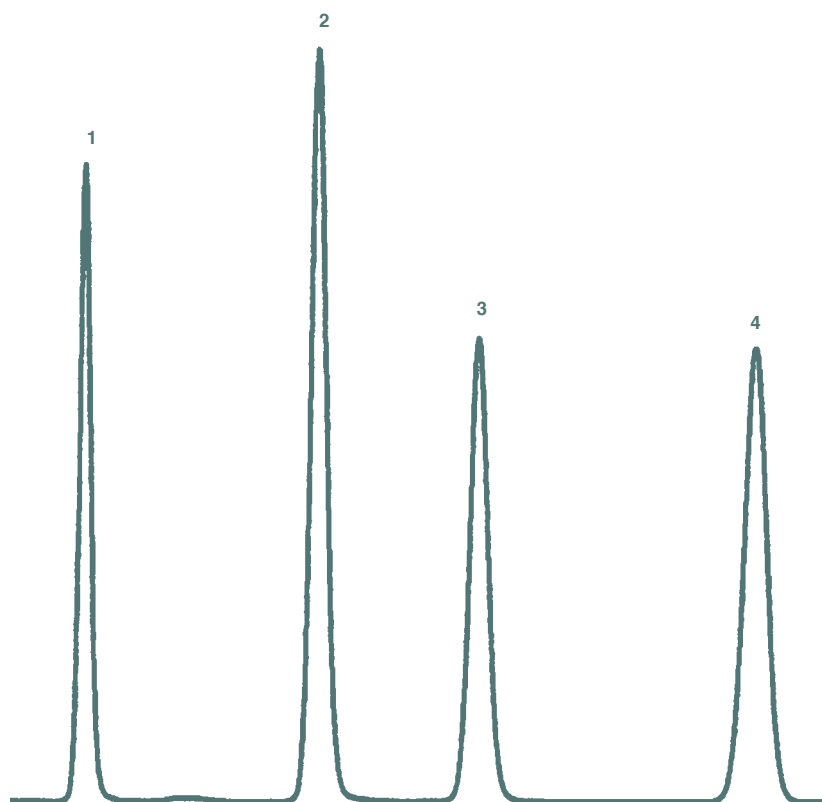
ProTec-RP

- Excellent peak shapes for strongly basic compounds
- Use simple buffers at low ionic strength
- Unique embedded amide chemistry
- Available as a C8, C18, or Phenyl

ProTec-RP columns enable the analysis of basic compounds without the use of amine modified mobile phases. This phase incorporates embedded amide groups into a hydrocarbon backbone producing a highly base deactivated column. This column is excellent for compounds containing amine groups. ProTec-RP can often produce better peak shapes for amine compounds than Chromegabond® WR. ProTec is

completely resistant to phase collapse because of the incorporation of the embedded polar amide groups. It should be noted that ProTec does not retain polar molecules as well as AquaSep. Our tests of any currently available base deactivated column have shown that ProTec columns produce the best peak shape for any amine containing compounds.

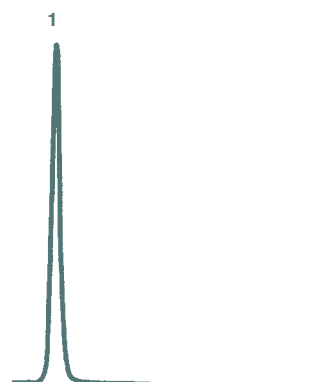
ProTec: pore size = 100° A;
 surface area = 250 g²/m;
 Carbon: C18 = 14%, C8 = 5%,
 Phenyl = 5%; pH range = 2-8



Tricyclic Antidepressants

Column: ProTec C18 150 x 4.6 mm
 Eluent: 40% Acetonitrile/60% Water
 Flow rate: 1 mL/min.
 Detection: UV @ 254 nm

1. Doxepin
2. Imipramine
3. Amitriptyline
4. Trimipramine

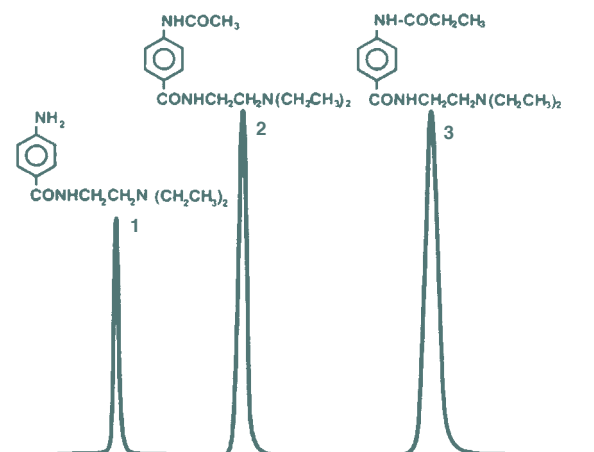


Antihistamines

Column: ProTec C18 (15 cm x 4.6 mm)
 Mobile phase: 20:60 Acetonitrile: Water
 (50mM K₂H₂PO₄ at pH = 5.5)
 Flow rate: 1 mL/min.
 Pressure: 110 bar
 Detection: UV @ 254 nm

1. Chlorpheniramine, TF = 1.2

ProTec-RP



Antiarrhythmics

Column: ProTec C18 (15 cm x 4.6 mm)

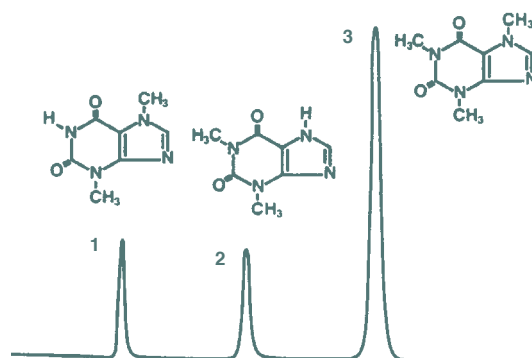
Mobile phase: 20:80 Methanol:Water (50 mM Tartaric/NH₃ at pH = 5.5)

Flow rate: 2 mL/min.

Pressure: 135 bar

Detection: UV @ 254 nm

1. Procainamide TF = 1.3
2. N-acetylprocainamide TF = 1.1
3. N-propionylprocainamide TF = 1.1



Cardiac Stimulants

Column: ProTec C18 (15 cm x 4.6 mm)

Mobile Phase: 20:80 Methanol: Water

(50 mM Tartaric/NH₃ at pH = 5.5)

Flow rate: 1 mL/min.

Pressure: 135 bar

Detection: UV @ 254 nm

1. Theobromine, TF = 1.2
2. Theophylline, TF = 1.1
3. Caffeine, TF = 1.0

Description	Particle Size (μ)	Length (mm)	Standard-bore P/N (4.6 mm)	Standard-bore P/N (4.0 mm)	Small-bore P/N (3.2 mm)	Small-bore P/N (2.0 mm)
ProTec C18	3	50	115121-PC18	114121-PC18	11d121-PC18	112121-PC18
ProTec C18	3	100	125121-PC18	124121-PC18	12d121-PC18	122121-PC18
ProTec C18	3	150	135121-PC18	134121-PC18	13d121-PC18	132121-PC18
ProTec C18	5	50	115221-PC18	114221-PC18	11d221-PC18	112221-PC18
ProTec C18	5	100	125221-PC18	124221-PC18	12d221-PC18	122221-PC18
ProTec C18	5	150	135221-PC18	134221-PC18	13d221-PC18	132221-PC18
ProTec C18	5	250	155221-PC18	135221-PC18	15d221-PC18	152221-PC18
ProTec C8	5	50	115221-PC8	114221-PC8	11d221-PC8	112221-PC8
ProTec C8	5	100	125221-PC8	124221-PC8	12d221-PC8	122221-PC8
ProTec C8	5	150	135221-PC8	134221-PC8	13d221-PC8	132221-PC8
ProTec C8	5	250	155221-PC8	135221-PC8	15d221-PC8	152221-PC8
ProTec Phenyl	5	50	115221-PPh	114221-PPh	11d221-PPh	112221-PPh
ProTec Phenyl	5	100	125221-PPh	124221-PPh	12d221-PPh	122221-PPh
ProTec Phenyl	5	150	135221-PPh	134221-PPh	13d221-PPh	132221-PPh
ProTec Phenyl	5	250	155221-PPh	135221-PPh	15d221-PPh	152221-PPh