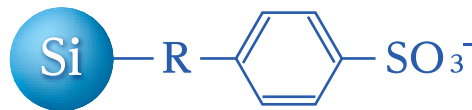


# Inertsil® CX

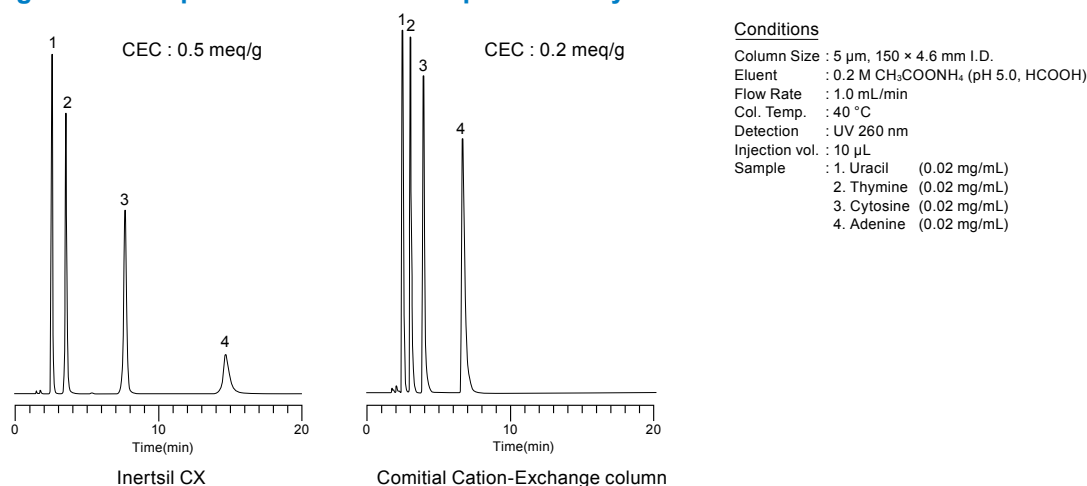
## Physical Properties

- Silica : 3 Series High Purity Silica Gel
- Particle Size : 5 µm
- Surface Area : 450 m<sup>2</sup>/g
- Pore Size : 100 Å (10 nm)
- Pore Volume : 1.05 mL/g
- Bonded Phase : Benzenesulfonyl Groups
- End-capping : None
- Carbon Loading : 14 %
- CEC : 0.5 meq/g
- USP Code : L9
- pH Range : 2 ~ 7.5

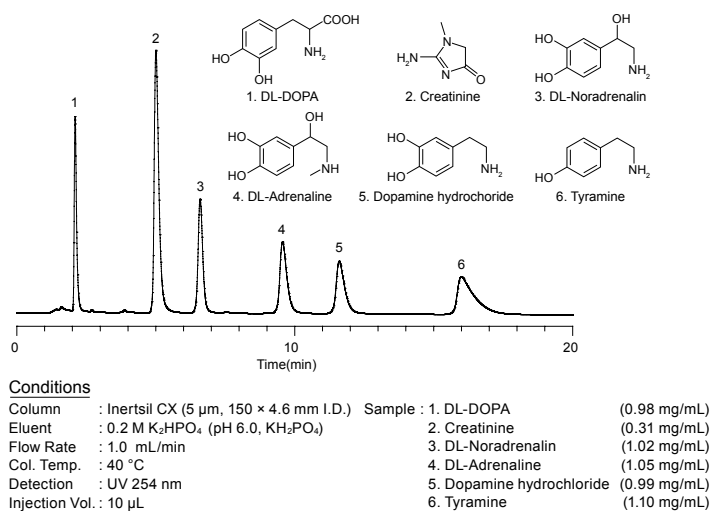


Inertsil CX has benzenesulfonyl groups bonded to silica gel by an alkyl chain. The sulfony groups at the end of the structure offer cationic functions required for the cation exchange chromatography. It is mainly used for analyses of basic compounds. Inertsil CX is manufactured under strict quality control in order to offer excellent lot-to-lot reproducibility as the same as Inertsil AX. Inertsil CX has high ion exchange capacity and provides high retentivity and selectivity. Therefore, it is also suited for analyzing amino acids and nucleobases shown in Fig. 2 and Fig. 3

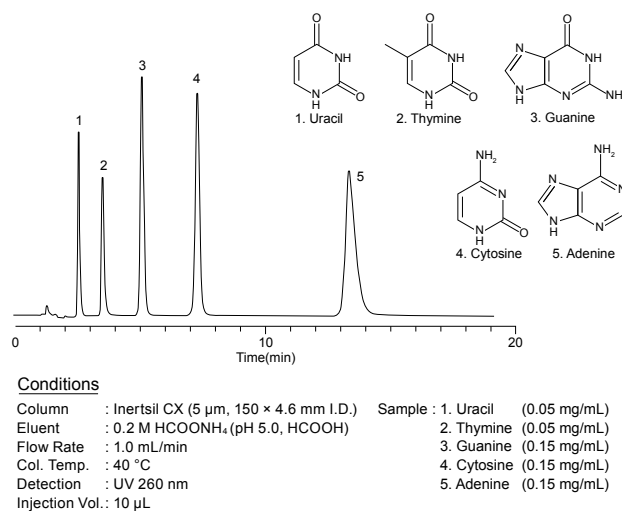
**Figure 1 : Comparison of lot-to-lot reproducibility with other brands**



**Figure 2 : Biogenic Amine Analysis**



**Figure 3 : Nucleoside Analysis**



### Analytical Columns

| Particle Size: 5 µm | Length \ I.D. (mm) | 1.0        | 1.5        |            |            |
|---------------------|--------------------|------------|------------|------------|------------|
|                     | 33                 | 5020-80011 | 5020-80021 |            |            |
|                     | 50                 | 5020-80012 | 5020-80022 |            |            |
|                     | 75                 | 5020-80013 | 5020-80023 |            |            |
|                     | 100                | 5020-80014 | 5020-80024 |            |            |
|                     | 150                | 5020-80015 | 5020-80025 |            |            |
|                     | 250                | 5020-80016 | 5020-80026 |            |            |
|                     | Length \ I.D. (mm) | 2.1        | 3.0        | 4.0        | 4.6        |
|                     | 33                 | 5020-07111 | 5020-07121 | 5020-07131 | 5020-07141 |
|                     | 50                 | 5020-07112 | 5020-07122 | 5020-07132 | 5020-07142 |
| 75                  | 5020-07113         | 5020-07123 | 5020-07133 | 5020-07143 |            |
| 100                 | 5020-07114         | 5020-07124 | 5020-07134 | 5020-07144 |            |
| 150                 | 5020-07115         | 5020-07125 | 5020-07135 | 5020-07145 |            |
| 250                 | 5020-07116         | 5020-07126 | 5020-07136 | 5020-07146 |            |

\* End-fittings are 1/16" Waters-compatible.

\* For maximum operating pressure information, please refer to page 46.

### Cartridge Guard Column E

| I.D. of the Analytical Column Applicable (mm) | Length (mm) | I.D. (mm) | Replacement Cartridge E Guard Column (2 EA.) | Cartridge E Holder / Cartridge Set (2 Cartridge E Guard Columns & 1 Holder) |
|---|-------------|-----------|--|---|
|   |             |           | Particle Size                                | Particle Size   |
|   |             |           | 5 µm   | 5 µm  |
| 1.0   | 10          | 1.0       | 5020-19234                                   | 5020-19284  |
| 1.5, 2.1                                      |             | 1.5       | 5020-19334                                   | 5020-19384  |
| 2.1, 3.0                                      |             | 3.0       | 5020-19134                                   | 5020-19184  |
| 4.0, 4.6                                      |             | 4.0       | 5020-19034                                   | 5020-19084  |
| 2.1, 3.0                                      | 20          | 3.0       | 5020-19534                                   | 5020-19584  |
| 4.0, 4.6                                      |             | 4.0       | 5020-19434                                   | 5020-19484  |
| Holder for Cartridge Guard Column E           |             |           | For 10 mm Length                             | 5020-08500  |
|   |             |           | For 20 mm Length                             | 5020-08550  |

\* End-fittings are 1/16" Waters-compatible.

\* For maximum operating pressure information, please refer to page 46.

Reversed Phase Columns

HILIC Columns

Normal Phase Columns

SEC Columns

Ion Exchange Columns

Application Specific Columns

Guard Columns

Preparative Columns

Capillary Columns

Applications

Cat. No. Index