

Alltech® On-Line Degassing Systems

- Most advanced degassing technology
- Product range meets every need and budget
- Upgrade capabilities available



Flow rate instability and baseline noise are the likely result of dissolved air in the mobile phase. Eliminate these problems with the Alltech® On-line Degassing System. Unlike helium sparging, degassing online does not require extra mobile phase preparation steps. Save time and avoid the expense, inconvenience, and hazards associated with helium tanks.

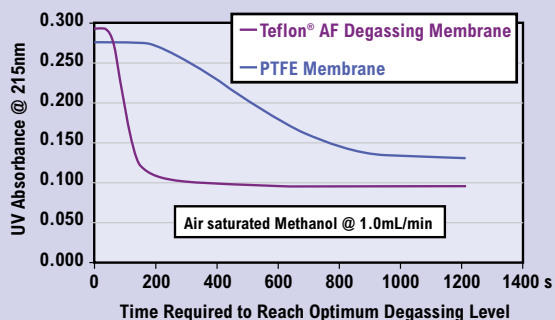
Every Alltech® On-Line Degassing System is equipped with our best degassing technology, and is available in two families, three flow ranges, and four channels to meet every need and budget. First decide which family features meet your need, then choose the degassing system with the flow range and number of channels you need today. If your needs change in the future you can upgrade at any time by either replacing or adding up to four degassing channels per unit.

hplc accessories | mobile phase

Advanced Degassing Technology from Three Key Components

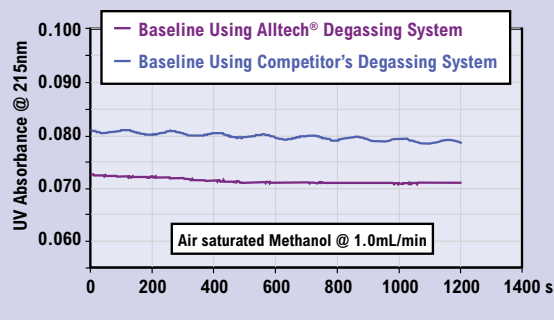
Teflon® AF Degassing Membrane

50x more efficient than competitive PTFE membranes. This means channel volumes are 10x smaller and equilibration is 4x faster.



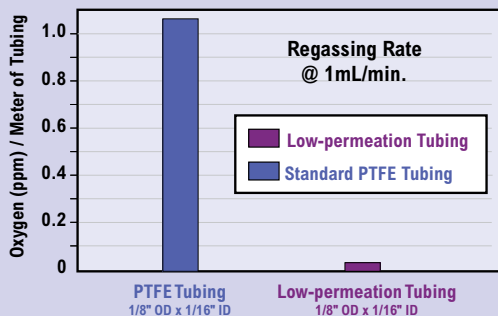
Continuous-Run Vacuum Pump

Delivers a steady baseline. Competitive degassers have fluctuating baselines due to the on/off cycle of the vacuum pump.

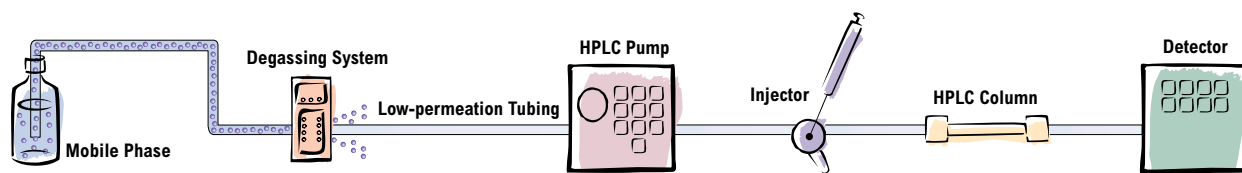


Low-permeation Tubing

Double-layered with an inert PTFE inner layer and a gas impermeable outer layer so solvent remains degassed as it travels to the pump.



Alltech® Online Degassing Systems



Eliminate extra mobile phase preparation steps by degassing online.

6524

Choice of Two Degasser Families:

Elite™ Degasser Family

In addition to the key degassing components, the Elite™ family incorporates a vacuum sensor, validation output and a four-year warranty. The sensor not only detects and alerts you to leaks, it also communicates with the vacuum pump. If a change in vacuum is detected due to mobile phase flow rate changes, the pump can compensate by changing its speed. The validation output records vacuum level to satisfy ISO and system validation requirements.

Select™ Degasser Family

The Select™ family has identical degassing efficiency to the Elite™ line since it contains the same key components. However, by omitting the vacuum sensor and validation output, and applying the industry standard one-year warranty, the Select™ family is available at an economical price.

Specification	Elite™ Degasser Family	Select™ Degasser Family
Membrane Type:	Teflon® AF	Teflon® AF
Vacuum Pump Type:	Continuous-run, self-adjusting speed	Continuous-run, one-speed
Low-permeation Fittings and Tubing:	Yes	Yes
Vacuum Sensor:	Yes	No
Validation Output:	Yes (5mVDC/1mm Hg)	No
Warranty:	4-year	1-year
Flow Range Choices:		
Micro:	0–1mL/min, 195µL internal volume	0–1mL/min, 195µL internal volume
Analytical:	0–5mL/min, 480µL internal volume	0–5mL/min, 480µL internal volume
Semi-prep:	0–10mL/min, 925µL internal volume	0–10mL/min, 925µL internal volume
Universal Power Supply:	Yes	Yes
Dimensions:	5" H x 3" W x 10" D (13cm H x 8cm W x 25cm D)	5" H x 3" W x 10" D (13cm H x 8cm W x 25cm D)

On-Line Degassing Systems

Description	Elite™ Family Part No.	Select™ Family Part No.
<i>Micro, 0–1mL/min, 195µL Internal Volume</i>		
2 Channel	590507	590500
4 Channel	590508	590501
<i>Analytical, 0–5mL/min, 480µL Internal Volume</i>		
1 Channel	590509	590502
2 Channel	590510	590503
3 Channel	590511	590504
4 Channel	590512	590505
<i>Semi-prep, 0–10mL/min, 925µL Internal Volume</i>		
1 Channel	590517	590514
2 Channel	590513	590506
3 Channel	590518	590515
4 Channel	590519	590516

Channel Upgrade Kits*

Description	Part No.
Micro, 0–1mL	590520
Analytical, 0–5mL	590521
Semi-prep, 0–10mL	590522

*Includes degassing channel, vacuum tubing, mounting screw, identification sticker, and instructions.

Face Plates*

Description	Part No.
For 1 Channel	590506A
For 2 Channel	590506B
For 3 Channel	590506C
For 4 Channel	590506D

*To replace an existing degassing channel, only a channel upgrade kit is necessary. To add more channels, a new face plate is also required.

Upgrade Labor Charge*

Description	Part No.
Labor	590525

*Channel upgrade kit and face plate must be ordered separately.

technical assistance

Contact Tech Support: Phone: 1.800.255.8324 (North America)

Email: contact.alltech@grace.com

Online: www.discoverysciences.com