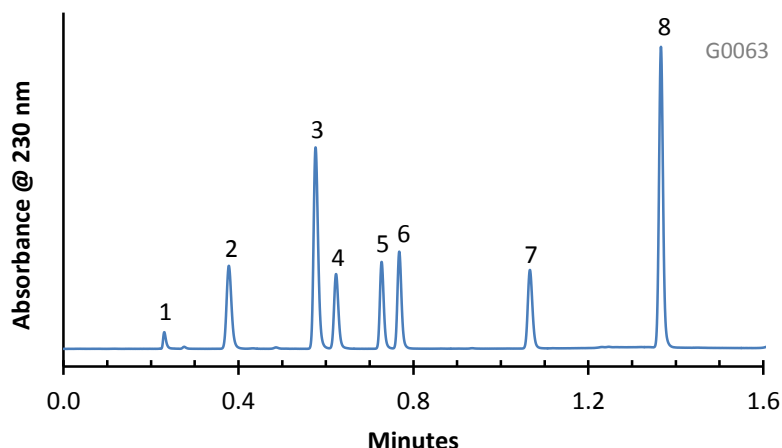


Separation of Antibiotic and Antifungal Drugs on HALO RP-Amide



PEAK IDENTITIES:

1. Unknown
2. Ketoconazole
3. Naftifine
4. Clotrimazole
5. Econazole
6. Sulconazole
7. Clofazimine
8. Tolnaftate

TEST CONDITIONS:

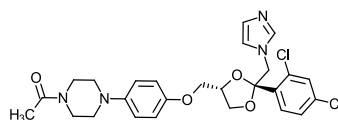
Column: 4.6 x 50 mm, HALO RP-Amide
 Part Number: 92814-407
 Mobile Phase: Gradient
 A= 0.02 M Potassium phosphate buffer, pH=3
 B= Acetonitrile
 Gradient:

Time	%B
0.0	41
1.0	80
1.6	80

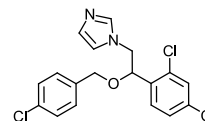
Flow Rate: 2.0 mL/min.
 Pressure: 188 Bar at start of gradient
 Temperature: 35°C
 Detection: UV 230 nm, VWD
 Injection Volume: 0.3 µL
 Sample Solvent: water/acetonitrile-25/75
 Response Time: 0.02 sec.
 Flow Cell: 2.5 µL semi-micro
 LC System: Shimadzu Prominence UFLC XR

The antimicrobial drug clofazimine and the antifungal drugs can be rapidly analyzed using the HALO RP-Amide column under gradient conditions with low back pressure.

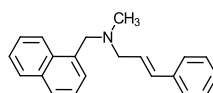
STRUCTURES:



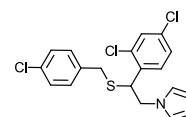
Ketoconazole



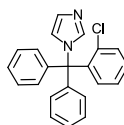
Econazole



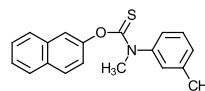
Naftifine



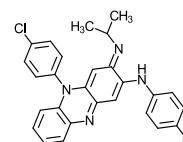
Sulconazole



Clotrimazole

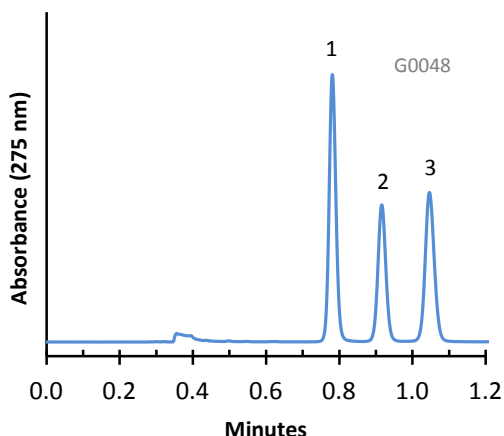


Tolnaftate



Clofazimine

Separation of Fluoroquinolone Drugs on HALO Phenyl-Hexyl Phase



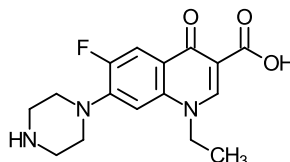
PEAK IDENTITIES:

1. Norfloxacin
2. Ciprofloxacin
3. Lomefloxacin

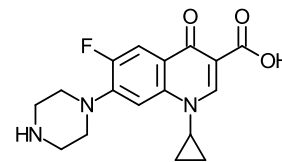
TEST CONDITIONS:

Column: 4.6 x 50 mm, HALO Phenyl-Hexyl
Part Number: 92814-406
Mobile Phase: 82/18: A/B
A= 0.025 M Sodium phosphate, pH=2.5 (adj.)
B= Acetonitrile
Flow Rate: 1.5 mL/min.
Pressure: 170 Bar
Temperature: 30°C
Detection: UV 275 nm, VWD
Injection Volume: 0.3 µL
Sample Solvent=Dimethylformamide/Acetonitrile
Response Time: 0.02 sec.
Flow Cell: 2.5 µL semi-micro
LC System: Shimadzu Prominence UFLC XR
ECV: ~14 µL

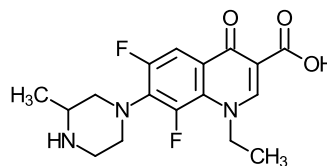
STRUCTURES:



Norfloxacin



Ciprofloxacin

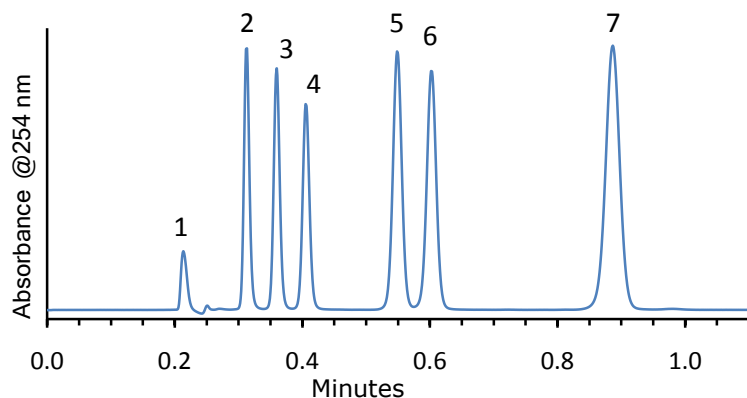


Lomefloxacin

The fluoroquinolone drugs can be quickly separated on HALO Phenyl-Hexyl stationary phase in less than 1.2 minutes.

Application Note: 011-AB

Separation of Sulfa Drugs on HALO RP-Amide



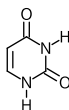
PEAK IDENTITIES:

1. Uracil
2. Sulfathiazole
3. Sulfamerazine
4. Sulfamethizole
5. Sulfachloropyridazine
6. Sulfamethoxazole
7. Sulfadimethoxine

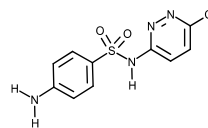
TEST CONDITIONS:

Column: 4.6 x 50 mm, HALO RP-Amide
 Part Number: 92814-407
 Mobile Phase: 70/30 A/B
 A=0.1% formic acid with 0.005 M ammonium formate (pH=3.0)
 B= acetonitrile
 Flow Rate: 2.0 mL/min.
 Pressure: 193 Bar
 Temperature: 35°C
 Detection: UV 254 nm, VWD
 Injection Volume: 0.5 µL
 Sample Solvent: methanol
 Response Time: 0.02 sec.
 Flow Cell: 2.5 µL semi-micro
 LC System: Shimadzu Prominence UFLC-XR
 Extra column volume: ~14 µL

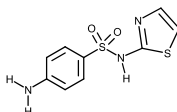
STRUCTURES:



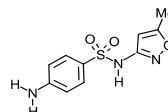
Uracil



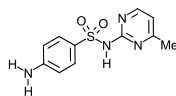
Sulfachloropyridazine



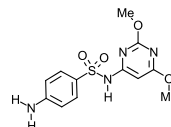
Sulfathiazole



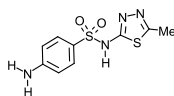
Sulfamethoxazole



Sulfamerazine



Sulfadimethoxine



Sulfamethizole