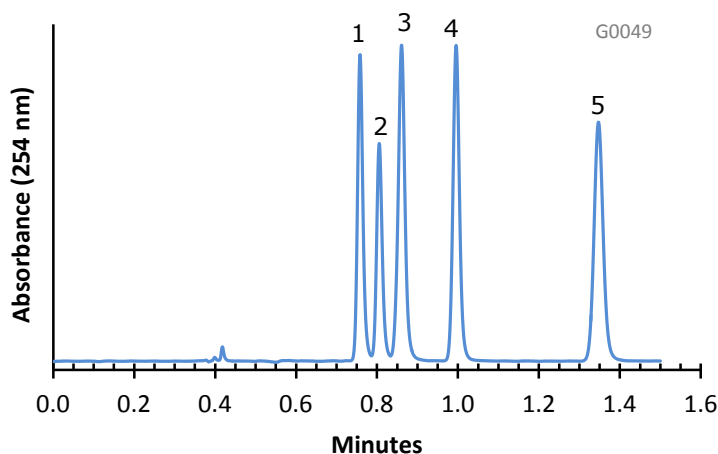


Separation of Antidepressants on HALO Penta-HILIC



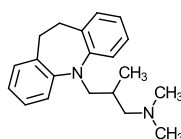
PEAK IDENTITIES:

1. Trimipramine
2. Amitriptyline
3. Doxepin
4. Nortriptyline
5. Amoxapine

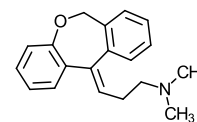
TEST CONDITIONS:

Column: 4.6 x 100 mm, HALO Penta-HILIC
Part Number: 92814-605
Mobile Phase: 7/93: A/B
A= 0.1 M Ammonium formate, pH=3.5 (adj.)
B= Acetonitrile
Flow Rate: 2.5 mL/min.
Pressure: 165 Bar
Temperature: 30°C
Detection: UV 254 nm, VWD
Injection Volume: 0.5 µL
Sample Solvent: 10/90: Water/Acetonitrile
Response Time: 0.02 sec.
Flow Cell: 2.5 µL semi-micro
LC System: Shimadzu Prominence UFLC XR
ECV: ~14 µL

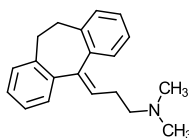
STRUCTURES:



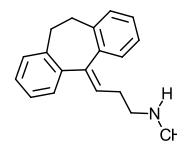
Trimipramine



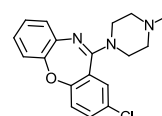
Doxepin



Amitriptyline



Nortriptyline



Amoxapine

Basic drugs such as antidepressants can be separated rapidly under HILIC conditions with good peak shape using HALO Penta-HILIC stationary phase.