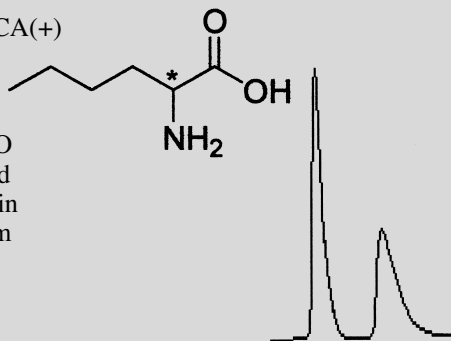


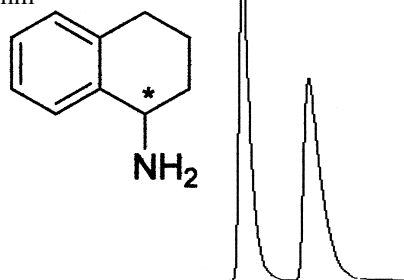
Norleucine

Norleucine
 Column: ChiroSil® RCA(+) or SCA(-)
 15 cm x 4.6 mm
 Mobile Phase:
 (45/55) CH₃OH/H₂O
 +10 mM Acetic acid
 Flow Rate: 1.0 mL/min
 Detection: UV 210 nm
 Run Time: 5.6 min
 k'₁: 1.28
 α: 1.75



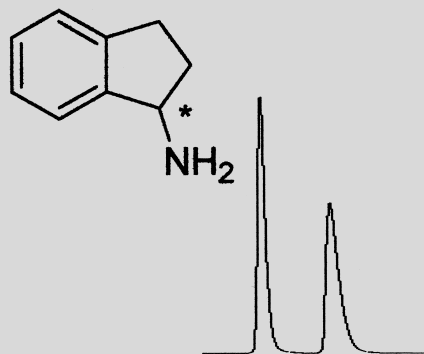
1,2,3,4-Tetrahydro-1-naphthylamine

1,2,3,4-Tetrahydro-1-naphthylamine
 Column: ChiroSil® RCA(+) or SCA(-) 15 cm x 4.6 mm
 Mobile Phase: (84/16) CH₃OH/H₂O
 +10 mM H₂SO₄ and 0.1% TEA
 Flow Rate: 1.0 mL/min
 Detection: UV 210 nm
 Run Time: 3.5 min
 k'₁: 0.82
 α: 1.76



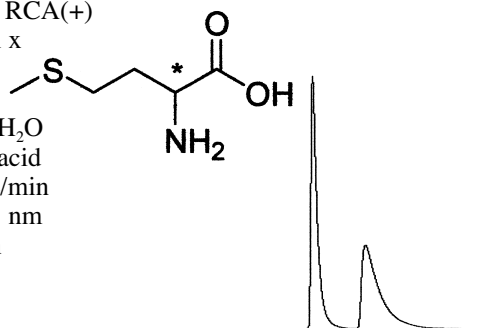
1-Aminoindan

1-Aminoindan
 Column: ChiroSil® RCA(+) or SCA(-) 15 cm x 4.6 mm
 Mobile Phase: (84/16) CH₃OH/H₂O
 +5 mM HClO₄
 Flow Rate: 1.0 mL/min
 Detection: UV 210 nm
 Run Time: 4.8 min
 k'₁: 1.44
 α: 1.91



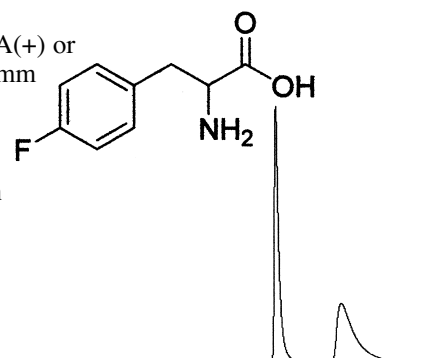
Methionine

Methionine
 Column: ChiroSil® RCA(+) or SCA(-) 15 cm x 4.6 mm
 Mobile Phase:
 (45/55) CH₃OH/H₂O
 +10 mM Acetic acid
 Flow Rate: 1.0 mL/min
 Detection: UV 210 nm
 Run Time: 7.5 min
 k'₁: 1.64
 α: 2.04



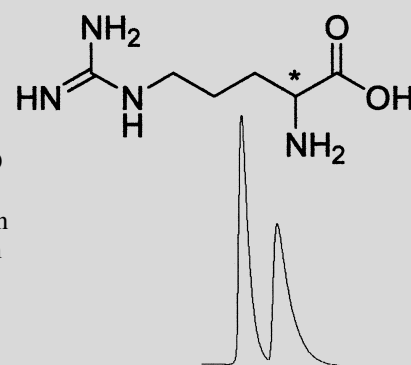
4-Fluorophenylalanine

4-Fluorophenylalanine
 Column: ChiroSil® RCA(+) or SCA(-) 15 cm x 4.6 mm
 Mobile Phase: (70/30) CH₃OH/H₂O+10 mM Acetic acid
 Flow Rate: 1.5 mL/min
 Detection: UV 210 nm
 Run Time: 9.6 min
 k'₁: 2.92
 α: 2.56



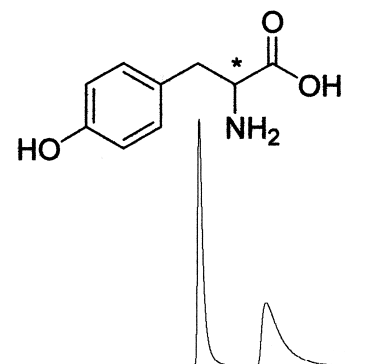
Arginine

Arginine
 Column: ChiroSil® RCA(+) or SCA(-) 15 cm x 4.6 mm
 Mobile Phase: (84/16) CH₃OH/H₂O
 +10 mM H₂SO₄
 Flow Rate: 0.8 mL/min
 Detection: UV 210 nm
 Run Time: 4.9 min
 k'₁: 1.21
 α: 1.64



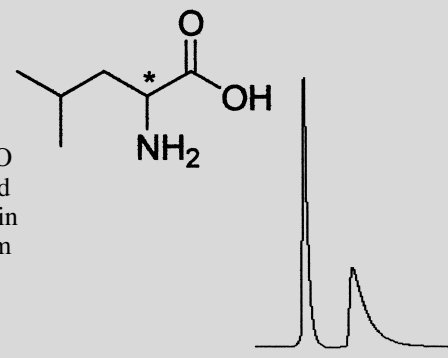
Tyrosine

Tyrosine
 Column: ChiroSil® RCA(+) or SCA(-) 15 cm x 4.6 mm
 Mobile Phase: (70/30) CH₃OH/H₂O
 +10 mM Acetic acid
 Flow Rate: 1.5 mL/min
 Detection: UV 210 nm
 Run Time: 9.1 min
 k'₁: 2.95
 α: 2.38



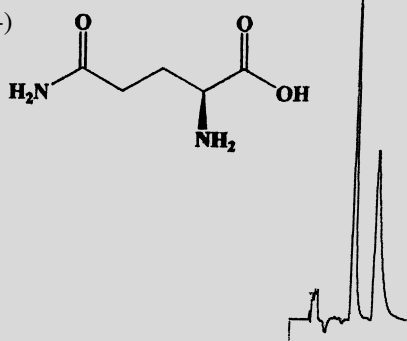
Leucine

Leucine
 Column: ChiroSil® RCA(+) or SCA(-) 15 cm x 4.6 mm
 Mobile Phase:
 (45/55) CH₃OH/H₂O
 +10 mM Acetic acid
 Flow Rate: 1.0 mL/min
 Detection: UV 210 nm
 Run Time: 5.5 min
 k'₁: 1.03
 α: 2.14



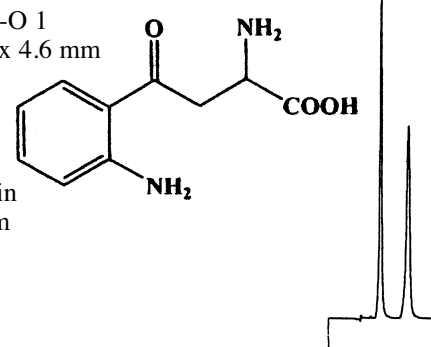
Glutamine

Glutamine
 Column: ChiroSil® SCA(-)
 25 cm x 4.6 mm
 Mobile Phase:
 (65/35) CH₃CN/H₂O
 +0.01% Acetic acid
 Flow Rate: 1.5 mL/min
 Detection: UV 210 nm
 Run Time: 6.5 min
 k'_1 : 1.51
 α : 1.61
 reference 46



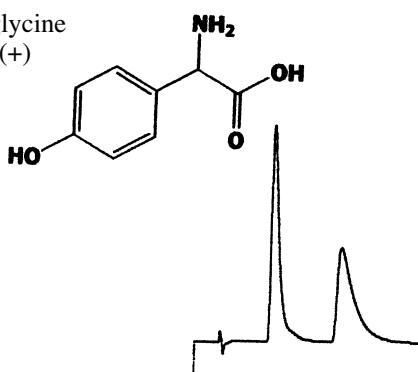
Kynurenine

Kynurenine
 Column = (S,S)-Whelk-O 1
 10/100 (FEC) 25 cm x 4.6 mm
 Mobile Phase =
 (65/35)
 H₂O/CH₃OH +
 0.1% Acetic Acid
 Flow Rate = 1.0 mL/min
 Detection = UV 254 nm
 Run Time = 9.0 min
 k'_1 = 1.17
 α = 1.99
 reference 46



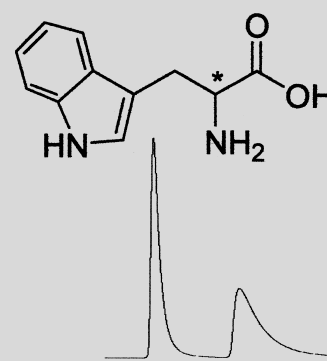
D,L-p-Hydroxy-Phenylglycine

D,L-p-Hydroxy-Phenylglycine
 Column: ChiroSil®-SCA(+)
 15 cm x 4.6 mm
 Mobile Phase:
 (50/50) CH₃OH/H₂O
 +0.02% Acetic acid
 Flow Rate: 1.0 mL/min
 Detection: UV 210 nm
 Run Time: 11.0 min
 k'_1 : 2.11
 α : 2.29
 reference 46



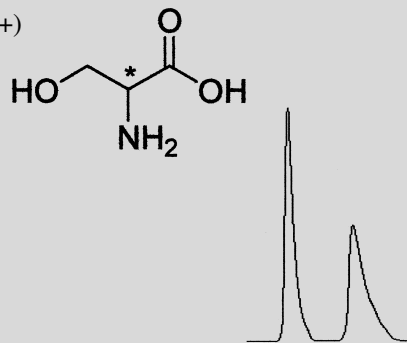
Tryptophan

Tryptophan
 Column: ChiroSil®
 RCA(+) or SCA(-)
 15 cm x 4.6 mm
 Mobile Phase: (70/30)
 CH₃OH/H₂O
 +10 mM Acetic acid
 Flow Rate: 1.5 mL/min
 Detection: UV 210 nm
 Run Time: 11.0 min
 k'_1 : 4.06
 α : 2.15



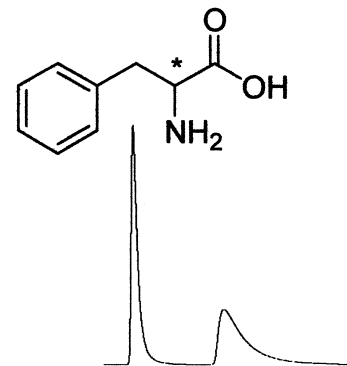
Serine

Serine
 Column: ChiroSil® RCA(+)
 or SCA(-)
 15 cm x 4.6 mm
 Mobile Phase:
 (84/16) CH₃OH/H₂O
 +5 mM HClO₄
 Flow Rate: 0.8 mL/min
 Detection: UV 210 nm
 Run Time: 6.0 min
 k'_1 : 1.37
 α : 1.99



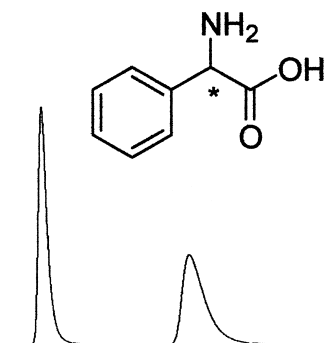
Phenylalanine

Phenylalanine
 Column: ChiroSil® RCA(+) or
 SCA(-) 15 cm x 4.6 mm
 Mobile Phase: (70/30)
 CH₃OH/H₂O
 +10 mM Acetic acid
 Flow Rate: 1.5 mL/min
 Detection: UV 210 nm
 Run Time: 8.9 min
 k'_1 : 2.66
 α : 2.57



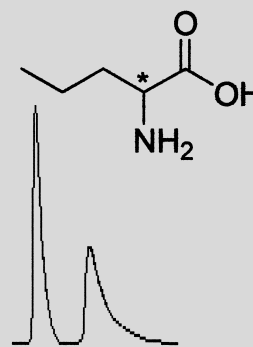
Phenylglycine

Phenylglycine
 Column: ChiroSil® RCA(+)
 or SCA(-) 15 cm x 4.6 mm
 Mobile Phase: (70/30)
 CH₃OH/H₂O
 +10 mM H₂SO₄ and
 0.1% TEA
 Flow Rate: 1.0 mL/min
 Detection: UV 210 nm
 Run Time: 13.1 min
 k'_1 : 3.14
 α : 2.60



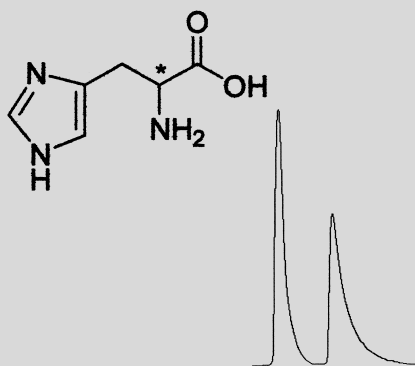
Norvaline

Norvaline
 Column: ChiroSil® RCA(+) or
 SCA(-) 15 cm x 4.6 mm
 Mobile Phase:
 (45/55) CH₃OH/H₂O
 +10 mM Acetic acid
 Flow Rate: 1.0 mL/min
 Detection: UV 210 nm
 Run Time: 5.3 min
 k'_1 : 1.15
 α : 1.79



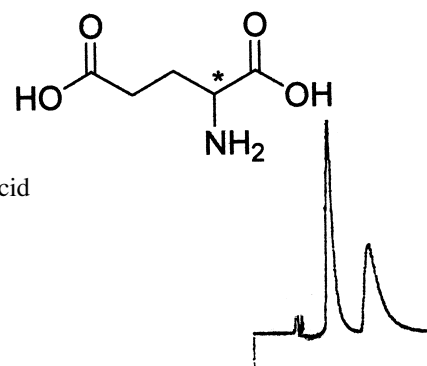
Histidine

Histidine
 Column: ChiroSil®
 RCA(+) or SCA(-)
 15 cm x 4.6 mm
 Mobile Phase:
 (45/55) CH₃OH/H₂O
 +10 mM Acetic acid
 Flow Rate: 1.0 mL/min
 Detection: UV 210 nm
 Run Time: 26.0 min
 k'₁: 10.96
 α: 1.27



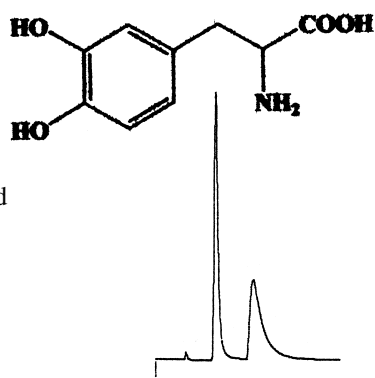
Glutamic Acid

Glutamic Acid
 Column: ChiroSil®
 RCA(+) or SCA(-)
 15 cm x 4.6 mm
 Mobile Phase:
 (65/35) CH₃OH/H₂O
 +0.05% Phosphoric acid
 Flow Rate: 1.0 mL/min
 Detection: UV 210 nm
 Run Time: 4.5 min
 k'₁: 0.71
 α: 2.27



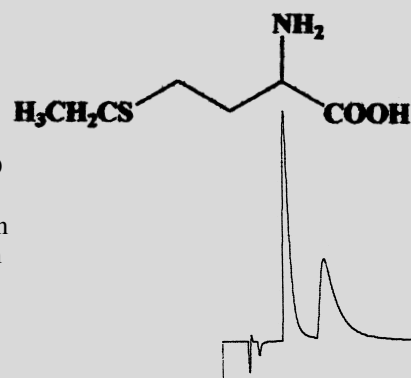
DOPA

DOPA
 Column: ChiroSil®
 RCA(+) or SCA(-)
 15 cm x 4.6 mm
 Mobile Phase:
 (70/30) CH₃OH/H₂O
 +0.01% Phosphoric acid
 Flow Rate: 1.0 mL/min
 Detection: UV 210 nm
 Run Time: 5.5 min
 k'₁: 0.97
 α: 2.30



Ethionine

Ethionine
 Column: ChiroSil®
 RCA(+) or SCA(-)
 15 cm x 4.6 mm
 Mobile Phase:
 (75/25) CH₃OH/H₂O
 +0.02% Acetic acid
 Flow Rate: 1.0 mL/min
 Detection: UV 210 nm
 Run Time: 6.2 min
 k'₁: 1.29
 α: 2.07



Lysine

Lysine
 Column: ChiroSil®
 RCA(+) or SCA(-)
 15 cm x 4.6 mm
 Mobile Phase:
 (70/30) CH₃OH/H₂O
 +0.01% Phosphoric acid
 Flow Rate: 1.0 mL/min
 Detection: UV 210 nm
 Run Time: 5.3 min
 k'₁: 1.44
 α: 1.48

