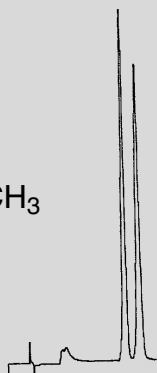
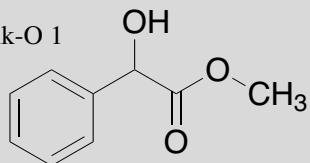
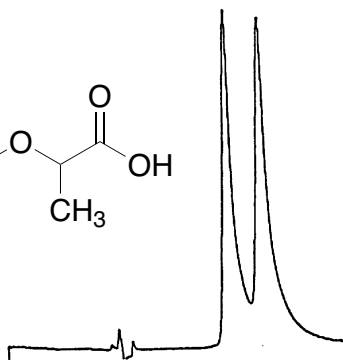
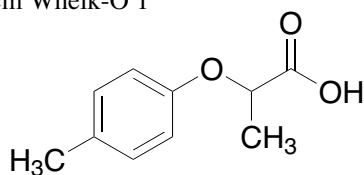


Methyl Mandelate

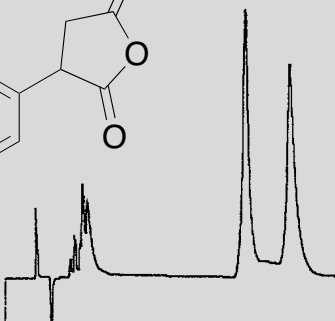
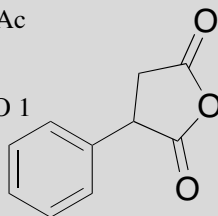
Methyl Mandelate
 73:27:0.1 H₂O/CH₃CN/HOAc
 1 ml/min; 254 nm
 Run Time = 20 min
 4.6 mm x 25 cm Whelk-O 1
 $k'_1 = 5.27$
 $\alpha = 1.15$
 reference 18



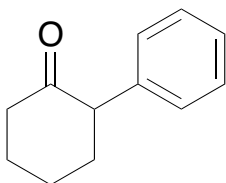
95:5:0.5 hexane/IPA/HOAc
 1 ml/min; 280 nm
 4.6 mm x 25 cm Whelk-O 1
 $k'_1 = 1.27$
 $\alpha = 1.28$
 reference 26



93:7:0.1 hexane/IPA/HOAc
 1 ml/min; 254 nm
 run time = 30 min
 4.6 mm x 25 cm Whelk-O 1
 $k'_1 = 8.10$
 $\alpha = 1.21$
 reference 18

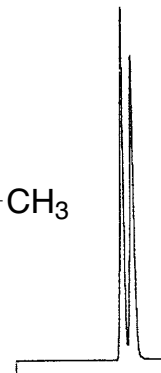
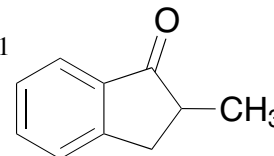


90:10 hexane/IPA
 1 ml/min; 254 nm
 4.6 mm x 25 cm Whelk-O 1
 $k'_1 = 3.41$
 $\alpha = 1.81$
 reference 7

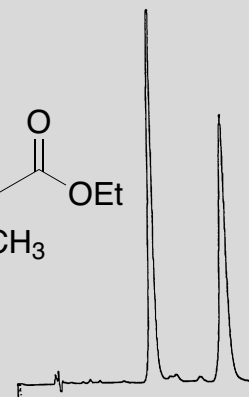
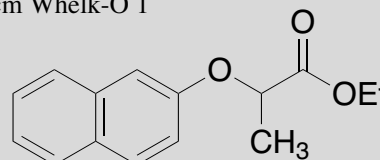


2-Methyl-1-Indanone

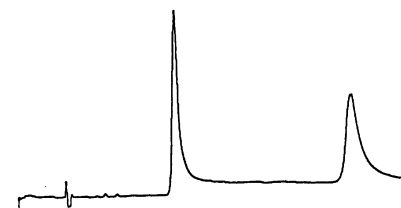
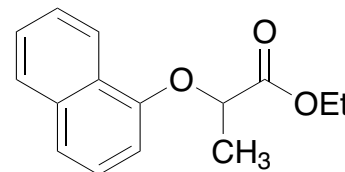
2-Methyl-1-Indanone
 99:1 hexane/IPA
 1 ml/min; 254 nm
 Run Time = 15 min
 4.6 mm x 25 cm Whelk-O 1
 $k'_1 = 4.00$
 $\alpha = 1.12$
 reference 18



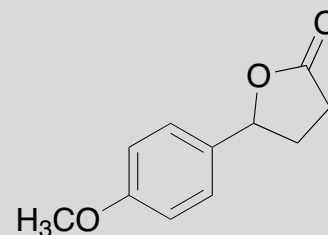
95:5:0.5 hexane/IPA/HOAc
 1 ml/min; 280 nm
 4.6 mm x 25 cm Whelk-O 1
 $k'_1 = 2.85$
 $\alpha = 1.70$
 reference 26



95:5:0.5 hexane/IPA/HOAc
 1 ml/min; 280 nm
 4.6 mm x 25 cm Whelk-O 1
 $k'_1 = 2.75$
 $\alpha = 2.53$
 reference 26

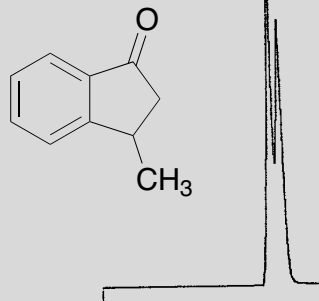


20% IPA/hex
 2 ml/min; 254 nm
 4.6 mm x 25 cm Whelk-O 1
 $k'_1 = 5.66$
 $\alpha = 1.29$
 reference 7

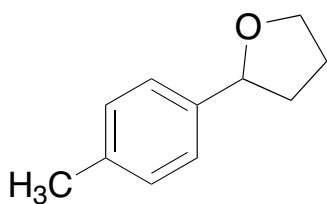


3-Methyl-1-Indanone

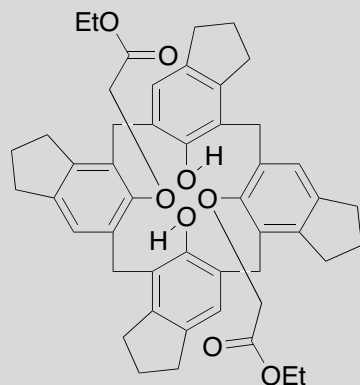
3-Methyl-1-Indanone
 $k'_1 = 6.11$
 $\alpha = 1.18$
 99:1 hexane/IPA
 1 ml/min; 254 nm
 Run Time = 20 min
 4.6 mm x 25 cm Whelk-O 1
 reference 18



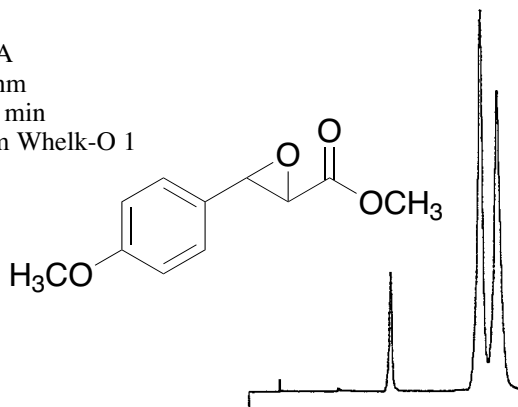
20% IPA/hex
 2 ml/min; 254 nm
 4.6 mm x 25 cm Whelk-O 1
 $k'_1 = 1.17$
 $\alpha = 1.66$
 reference 7



MeOH/IPA/hexane
 1 ml/min; 254 nm
 Run Time = 17 min
 4.6 mm x 25 cm Whelk-O 1
 $k'_1 = 12.73$
 $\alpha = 1.16$
 reference 19

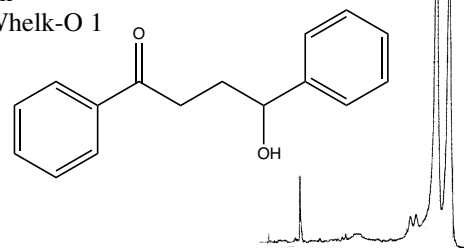


97:3 hexane/IPA
 1 ml/min; 254 nm
 Run Time = 27 min
 4.6 mm x 25 cm Whelk-O 1
 $k'_1 = 8.46$
 $\alpha = 1.08$
 reference 18

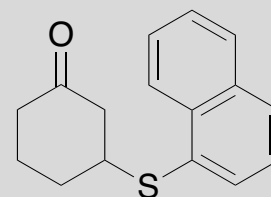


DPHB

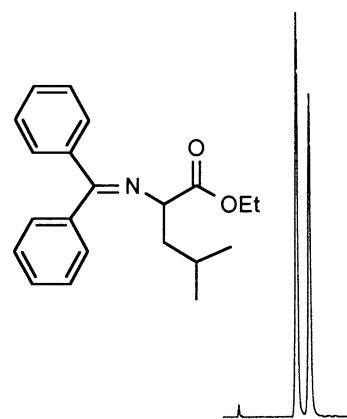
DPHB
 6% EtOH/hexane
 1 ml/min; 254 nm
 Run Time = 41 min
 4.6 mm x 25 cm Whelk-O 1
 reference 29



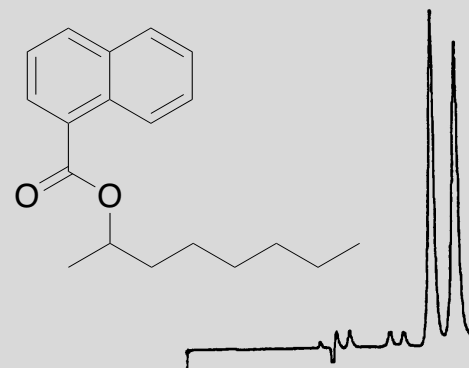
98:2 hexane/IPA
 1 ml/min; 254 nm
 4.6 mm x 25 cm Whelk-O 1
 $k'_1 = 7.82$
 $\alpha = 1.12$
 reference 7



Column = L-Leucine
 25 cm x 4.6 mm
 Mobile Phase = (99.5/0.5)
 Hexane/IPA
 Flow Rate = 1.0 mL/min
 Detection = UV 254 nm
 Run Time = 11.5 min
 $k'_1 = 2.42$
 $\alpha = 1.21$
 reference 57

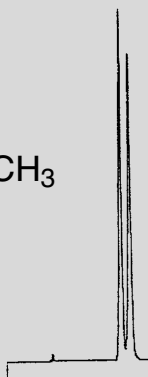
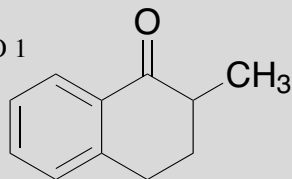


10% IPA/hexane
 1 ml/min; 254 nm
 4.6 mm x 25 cm
 Whelk-O 1
 $k'_1 = 2.27$
 $\alpha = 1.11$
 reference 26



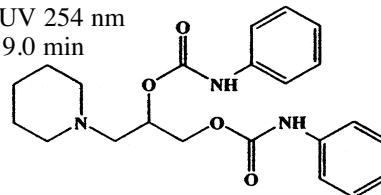
2-Methyl-1-Tetralone

2-Methyl-1-Tetralone
 99:1 hexane/IPA
 1 ml/min; 254 nm
 Run Time = 12 min
 4.6 mm x 25 cm Whelk-O 1
 $k'_1 = 2.76$
 $\alpha = 1.11$
 reference 18



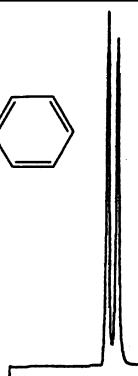
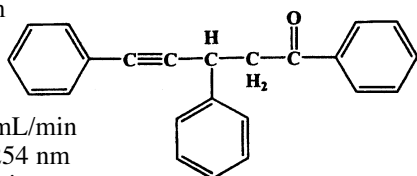
Diperodon

Diperodon
 Column = (R)- α -Burke 2 25 cm x 4.6 mm
 Mobile Phase = (48/48/4) CH₂Cl₂/Hexane/Ethanol
 + 1.5 mM Ammonium Acetate
 Flow Rate = 1.0 mL/min
 Detection = UV 254 nm
 Run Time = 9.0 min
 $k'_1 = 1.7$
 $\alpha = 1.25$
 reference 46

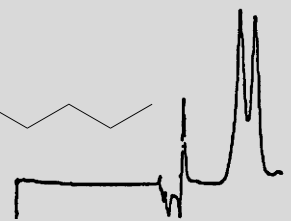
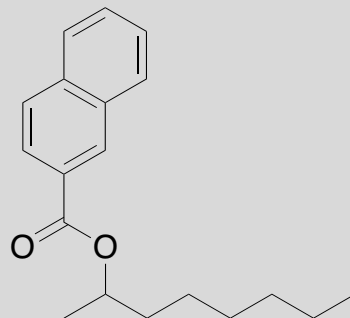


1,3,5-Triphenylpent-4-yn-1-one

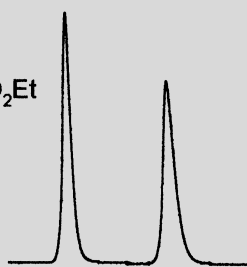
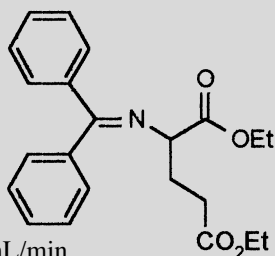
1,3,5-Triphenylpent-4-yn-1-one
 Column = (S,S)-ULMO
 25 cm x 4.6 mm
 Mobile Phase =
 Hexane +
 0.5% IPA
 Flow Rate = 1.0 mL/min
 Detection = UV 254 nm
 Run Time = 6.5 min
 $k'_1 = 1.19$
 $\alpha = 1.19$
 reference 46



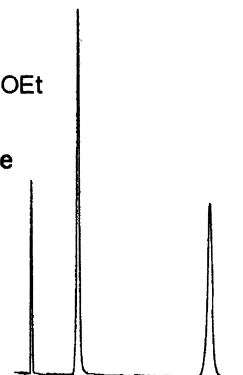
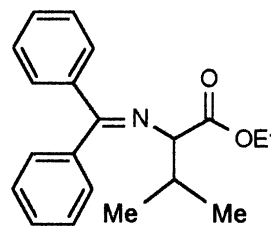
10% IPA/hexane
 1 ml/min; 254 nm
 4.6 mm x 25 cm
 Whelk-O 1
 $k'_1 = 0.67$
 $\alpha = 1.16$
 reference 26



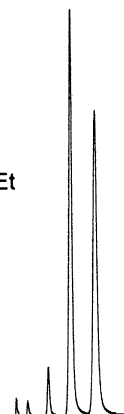
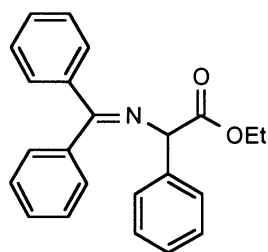
Column = (S,S)-
 Whelk-O 1
 25 cm x 4.6 mm
 Mobile Phase =
 (98/2)
 Hexane/IPA
 Flow Rate = 1.0 mL/min
 Detection = UV 254 nm
 Run Time = 34.0 min
 $k'_1 = 8.00$
 $\alpha = 1.44$
 reference 51



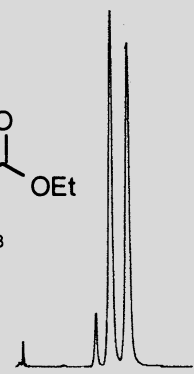
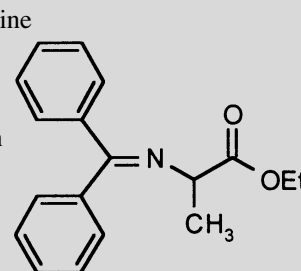
Column = (S,S)-
 Whelk-O 1
 25 cm x 4.6 mm
 Mobile Phase =
 (98/2)
 Hexane/IPA
 Flow Rate = 1.0 mL/min
 Detection =
 UV 254 nm
 Run Time = 20.5 min
 $k'_1 = 1.62$
 $\alpha = 4.18$
 reference 51



Column = (S,S)- β -Gem 1
 25 cm x 4.6 mm
 Mobile Phase = (99.5/0.5)
 Hexane/IPA
 Flow Rate = 1.0 mL/min
 Detection = UV 254 nm
 Run Time = 14.5 min
 $k'_1 = 2.67$
 $\alpha = 1.43$
 reference 57

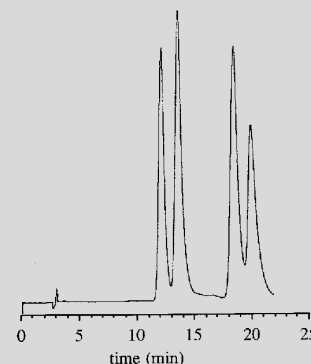
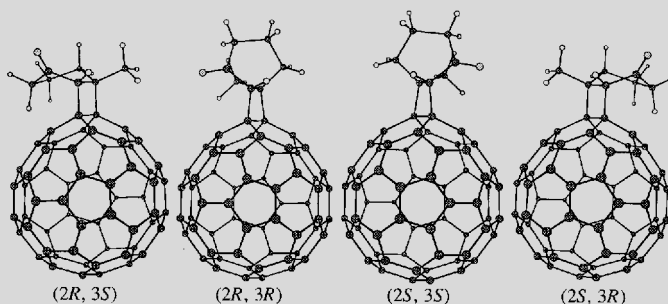


Column = D-Phenylglycine
 25 cm x 4.6 mm
 Mobile Phase = 99/1)
 Hexane/IPA
 Flow Rate = 1.0 mL/min
 Detection = UV 254 nm
 Run Time = 13.5 min
 $k'_1 = 3.10$
 $\alpha = 1.18$
 reference 57



Buckminsterfullerene-Enone [2+2] Photoadducts

Semi-prep separation on analytical column
 2:1 toluene/hexane
 1 ml/min; 400 nm
 Run Time = 22 min
 Sample: 100 μ l of
 5 mg/ml solution (0.5 mg)
 4.6 mm x 25 cm Whelk-O 1
 reference 8



Ethyl-2-(p-Hydroxyphenoxy) Propionate

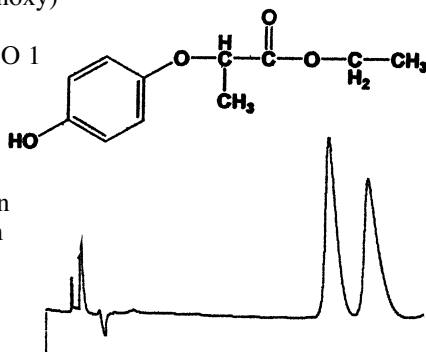
Ethyl-2-(p-Hydroxyphenoxy)
 Propionate

Column = (S,S)-Whelk-O 1
 10/100 (FEC)
 25 cm x 4.6 mm

Mobile Phase = (98/2)
 Hexane/Ethanol

Flow Rate = 2.0 mL/min
 Detection = UV 254 nm
 Run Time = 21.1 min

$k'_1 = 12.72$
 $\alpha = 1.15$
 reference 46



Tert-butyl-2-(benzamido) cyclopentyl carbamate

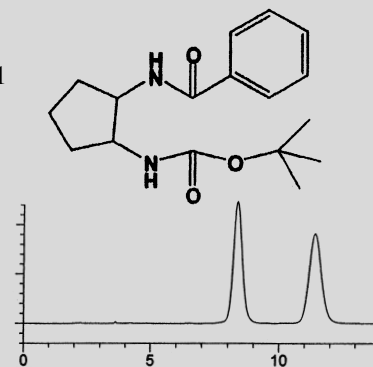
Tert-butyl-2-(benzamido)
 cyclopentyl carbamate

Column = (S,S)-Whelk-O 1
 10/100 (FEC)
 25 cm x 4.6 mm

Mobile Phase = (95/5)
 Hexane/IPA

Flow Rate = 1.5 mL/min
 Detection = UV 254 nm

$k'_1 = 3.65$
 $\alpha = 1.46$
 reference 46



1'-Acetoxychavicol Acetate

1'-Acetoxychavicol Acetate

Column = (R,R)-Whelk-O 1
 10/100 (FEC)
 25 cm x 4.6 mm

Mobile Phase = (90/10)
 Hexane/IPA

Flow Rate = 1.5 mL/min
 Detection = UV 254 nm
 $k'_1 = 5.94$
 $\alpha = 2.05$
 reference 46

