

On-column Tryptic Digest of Bovine Serum Albumin

Using a ProteCol™ C18 capillary LC column

The reversed phase analysis of a tryptic digest of a sample is a typical way to characterise the protein composition. To perform the digest in-line with trypsin being immobilised on the surface of a pre-column has a number of advantages. There is no sample loss, there is minimal dilution of the sample and there is no auto-digestion of trypsin or sample

contamination with trypsin. Furthermore, it is possible to perform the digest in a much shorter time.

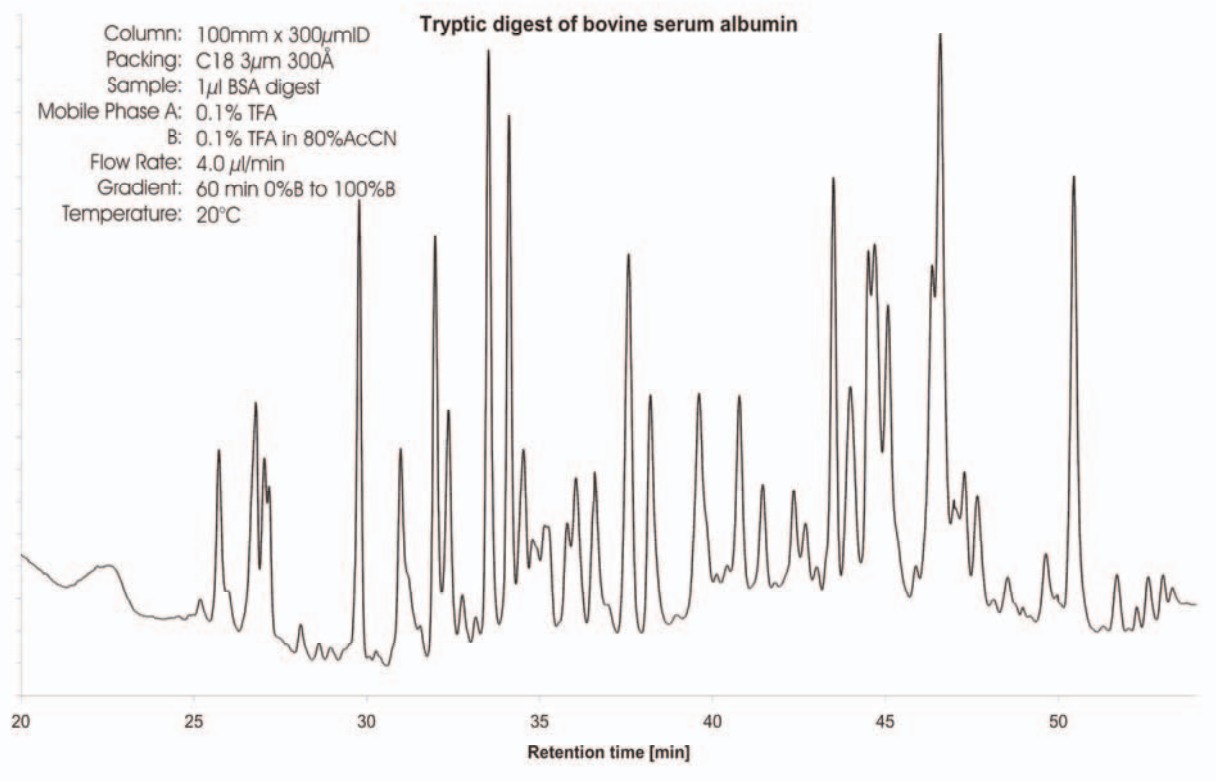
In this application trypsin was immobilised onto a ProteCol-CMD column. Bovine serum albumin was injected into the column and the flow switched off. The column was incubated at 37°C for 2 hours and the

eluent was collected. One µl of the digest was injected onto a ProteCol™ C18 column and analysed using a 60 minute gradient.

Ordering Information:

ProteCol Column C18 300 µm ID x 100 mm 300 angstroms: 2202254

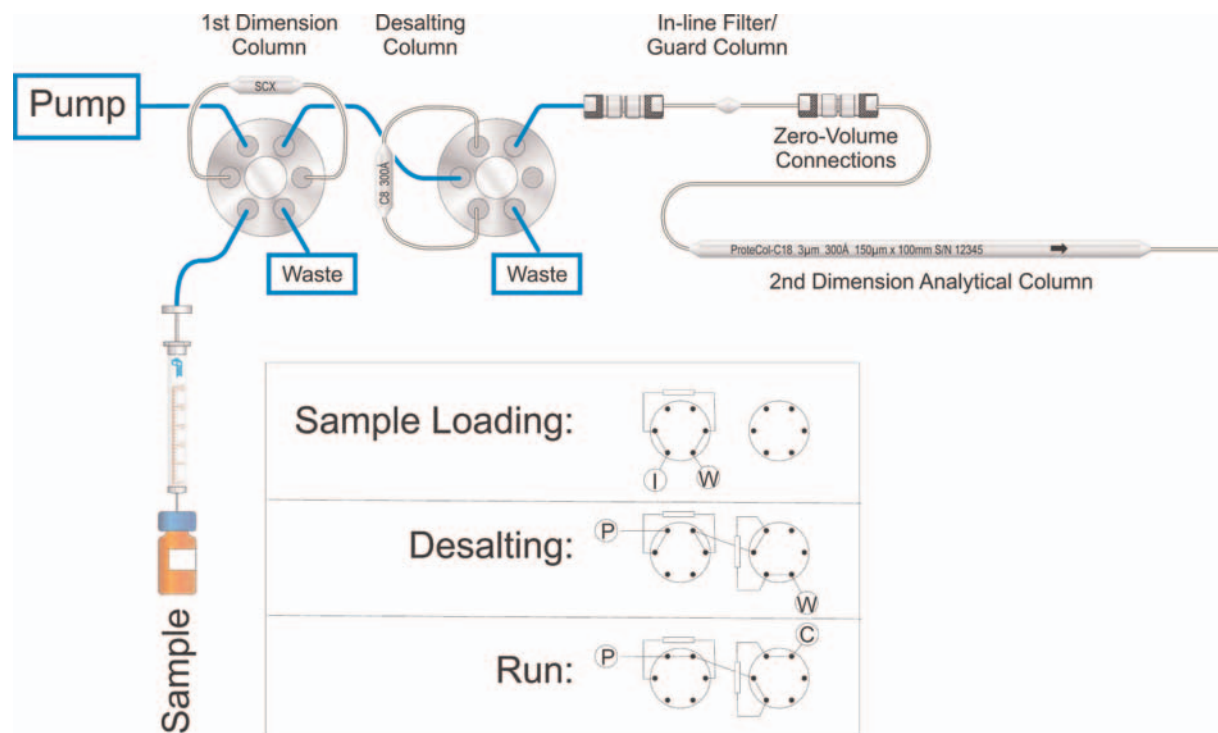
Accessory Kit: 222000



THE ProteCol™ SYSTEM

Incorporating columns, unions, tubing, splitters and filters, every component of ProteCol has been designed specifically for Capillary LC.

- **Performance Plus:** The peak broadening effect of dead volume and total swept volume is much more significant in Capillary LC compared to conventional LC. The entire ProteCol range has been specifically designed as a 'zero dead volume' system to give you the highest possible resolution and efficiency, therefore maximizing the advantages of Capillary LC
- **Ease of Use:** A key to the success of the ProteCol system is the ease with which zero dead volume connections can be made between columns, tubing and all accessories
- **Versatility:** ProteCol columns, unions and accessories are designed to be used together as a complete system, or can be individually incorporated into your existing capillary LC setup
- **Flexibility:** With a variety of columns, unions, and tubing sizes, ProteCol adapts to suit your own requirements



For ProteCol product information, visit <http://www.sge.com/html/lc/columns/protecol.asp> or contact support@sge.com

SGE International Pty. Ltd.
Toll Free: 1800 800 167
Tel: +61 (0) 3 9837 4200
Fax: +61 (0) 3 9874 5672
Email: support@sge.com

SGE Europe Ltd
Tel: +44-1908 568 844
Fax: +44-1908 566 790
Email: uk@sge.com

SGE Europe Ltd
Tel: +33 1 6929 8090
Fax: +33 1 6929 0925
Email: france@sge.com

SGE, Incorporated (USA)
Toll Free: (800) 945 6154
Tel: +1-512-837 7190
Fax: +1-512-836 9159
Email: usa@sge.com

SGE GmbH
Tel: +49 6151 860486
Fax: +49 6151 860489
Email: germany@sge.com

SGE Japan Inc.
Tel: +81 45 222 2885
Fax: +81 45 222 2887
Email: japan@sge.com

SGE India
Tel: +91 (22) 2471 5896
Fax: +91 (22) 2471 6592
Email: sales@jindustries.com.cn

SGE China
Tel: +86 (10) 6588 8666
Fax: +86 (10) 6588 6577
Email: sales@jindustries.com.cn

SGE Gulf
Tel: +971-6-557 3341
Fax: +971-6-557 3541
Email: gulfsupport@sge.com

