

# Analysis of the Tryptic Digest of a Monoclonal Antibody

Using a ProteCol™ capillary LC column

More and more modern medicines are protein based. To obtain large and pure quantities these proteins are manufactured using a recombinant technique. The DNA sequence for the protein is transferred into a host, which in turn produces the protein as one of its own. The quality of expression can be monitored by analysing a tryptic digest.

The following example is the tryptic digest of a chimeric human-mouse

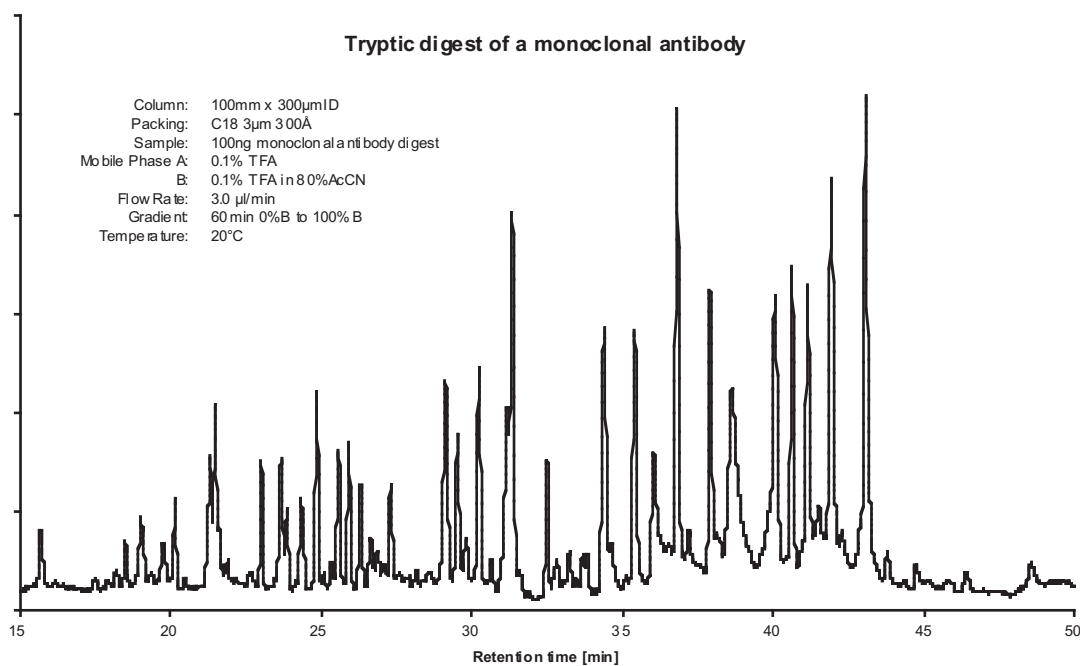
monoclonal antibody. A chimeric antibody is a hybrid of a variable region of mouse origin combined with the human constant region to minimise adverse immune response by the patient.

Ordering Information:

ProteCol Column C18 300 um ID x 100 mm 300 angstroms: 2202254

Accessory Kit: 222000

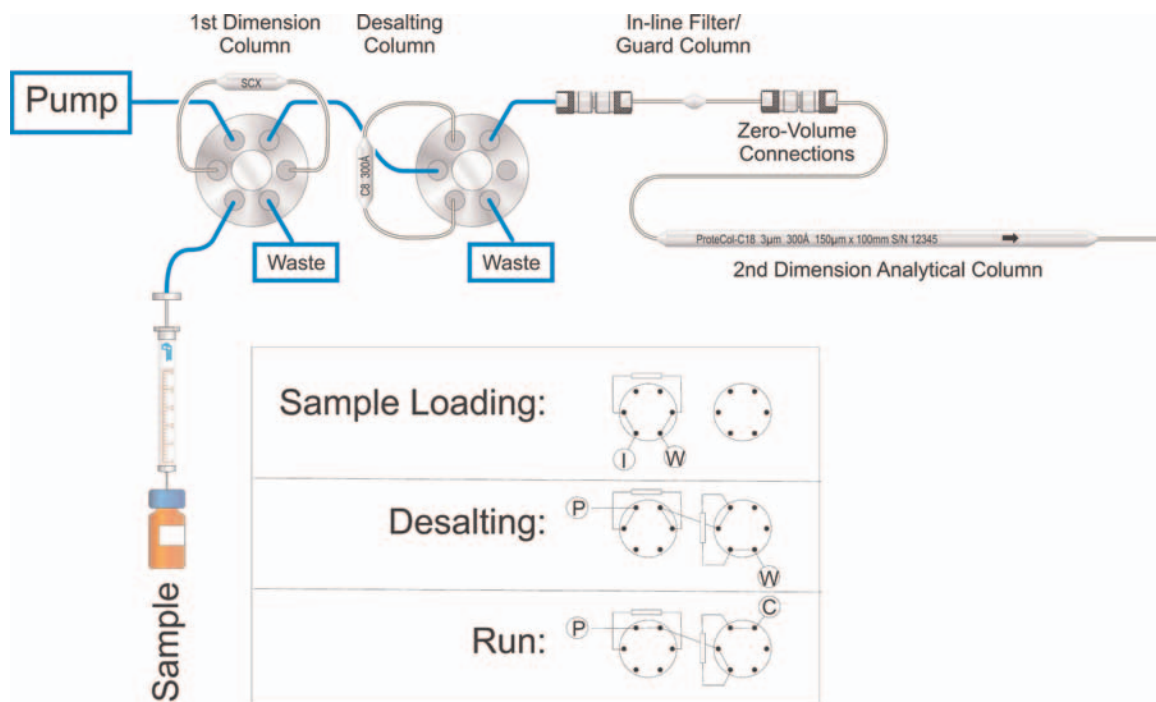
ProteCol™ APPLICATION NOTE



# THE ProteCol™ SYSTEM

Incorporating columns, unions, tubing, splitters and filters, every component of ProteCol has been designed specifically for Capillary LC.

- **Performance Plus:** The peak broadening effect of dead volume and total swept volume is much more significant in Capillary LC compared to conventional LC. The entire ProteCol range has been specifically designed as a 'zero dead volume' system to give you the highest possible resolution and efficiency, therefore maximizing the advantages of Capillary LC
- **Ease of Use:** A key to the success of the ProteCol system is the ease with which zero dead volume connections can be made between columns, tubing and all accessories
- **Versatility:** ProteCol columns, unions and accessories are designed to be used together as a complete system, or can be individually incorporated into your existing capillary LC setup
- **Flexibility:** With a variety of columns, unions, and tubing sizes, ProteCol adapts to suit your own requirements



## REFERENCES

1. S. H. Doares, P. Albersheim and A. G. Darvill, Carbohydr. Res., 210 (1991) 311-317.
2. E. Lau and A. Basic, J. Chromatogr., (In Press).

For ProteCol product information, visit <http://www.sge.com/html/lc/columns/protectol.asp> or contact support@sge.com

**SGE International Pty. Ltd.**  
Toll Free: 1800 800 167  
Tel: +61 (0) 3 9837 4200  
Fax: +61 (0) 3 9874 5672  
Email: support@sge.com

**SGE Europe Ltd**  
Tel: +44-1908 568 844  
Fax: +44-1908 566 790  
Email: uk@sge.com

**SGE Europe Ltd**  
Tel: +33 1 6929 8090  
Fax: +33 1 6929 0925  
Email: france@sge.com

**SGE, Incorporated (USA)**  
Toll Free: (800) 945 6154  
Tel: +1-512-837 7190  
Fax: +1-512-836 9159  
Email: usa@sge.com

**SGE GmbH**  
Tel: +49 6151 860486  
Fax: +49 6151 860489  
Email: germany@sge.com

**SGE Japan Inc.**  
Tel: +81 45 222 2885  
Fax: +81 45 222 2887  
Email: japan@sge.com

**SGE India**  
Tel: +91 (22) 2471 5896  
Fax: +91 (22) 2471 6592  
Email: sgeindia@vsnl.com

**SGE China**  
Tel: +86 (10) 6588 8666  
Fax: +86 (10) 6588 6577  
Email: sales@jjindustries.com.cn

**SGE Gulf**  
Tel: +971-6-557 3341  
Fax: +971-6-557 3541  
Email: gulfsupport@sge.com

