



Flash Cartridges

Contents

Advantages	330
Application / Product Finder.....	331
Ordering Information.....	332

Introduction

Flash Cartridges

Traditionally, irregular shaped silica, typically with particles sizes of 40-63 μm , has been successfully used for sample clean-up and fast workup after chemical synthesis. Also, this type of silica represents cost-effective media, yet with ever improved reproducibility, for standard applications.

Applying spherical silica will greatly enhance resolution - in less time, for more challenging demands. Spherical silica generates substantially less back pressure so that increased flow rates can be applied.

Flash Cartridges

YMC-DispoPackAT Flash Cartridges - high quality products for your purification success

YMC-DispoPackAT cartridges are available in different volumes taking from 12 g to 800 g of packing material. The product finder on the next page provides indicative data on how to choose a cartridge size, depending on sample volume. Apart from straight silica, the following standard bonding options are available: NH₂ (Amino), Diol and ODS (C18).

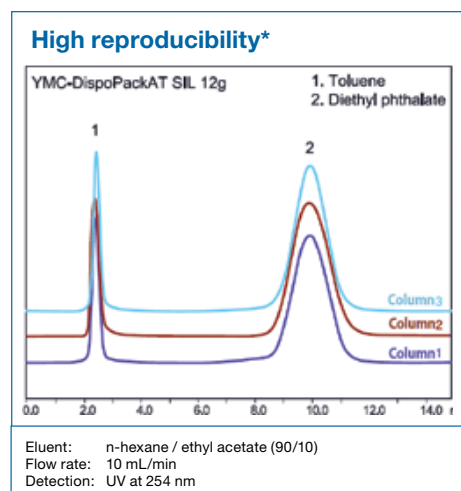
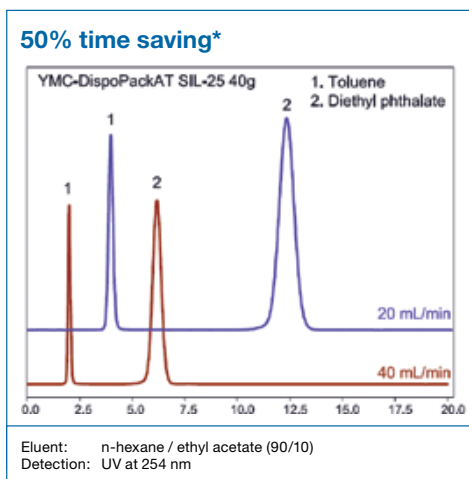
In order to verify the efficiency or to compare the differences, please request evaluation samples from YMC or authorized YMC Distributors.



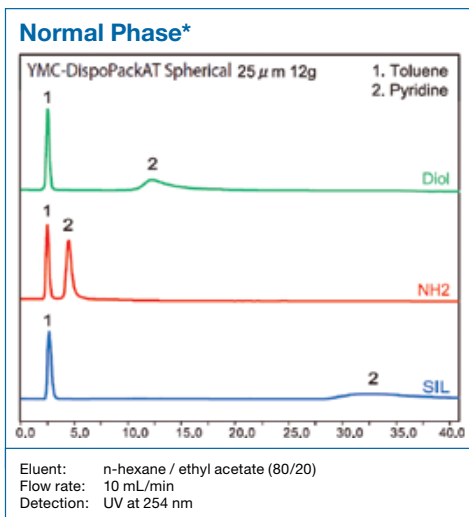
Main advantages:

- Compatible with all common Flash Systems (e.g. ISCO, Interchim, Agilent, Grace, Büchi ...)
- Fast and easy installation using Luer/Luer-Lock-connectors
- Using 25 µm material: 50% time saving through high resolution at high flow-conditions
- High reproducibility

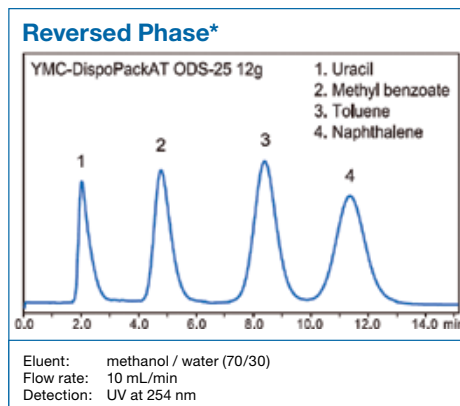
Flash Cartridges	Traditional	Premium
Shape	irregular	spherical
Base	silica	silica
Particle size / µm	40-63	25
Pore size / nm	SIL 6; NH ₂ , Diol, ODS 15	8
Column connection	Luer / Luer lock	Luer / Luer lock
Pressure tolerance	13.8 bar (300 g & 800 g 12.4 bar)	13.8 bar (300 g & 800 g 12.4 bar)
Available bondings	SIL, NH ₂ , Diol, ODS	SIL, NH ₂ , Diol, ODS
Available sizes / g	12, 40, 120, 300, 800	12, 40, 120, 300, 800



Flash Cartridges

**Application Examples Normal Phase:**

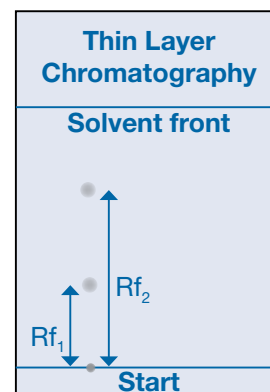
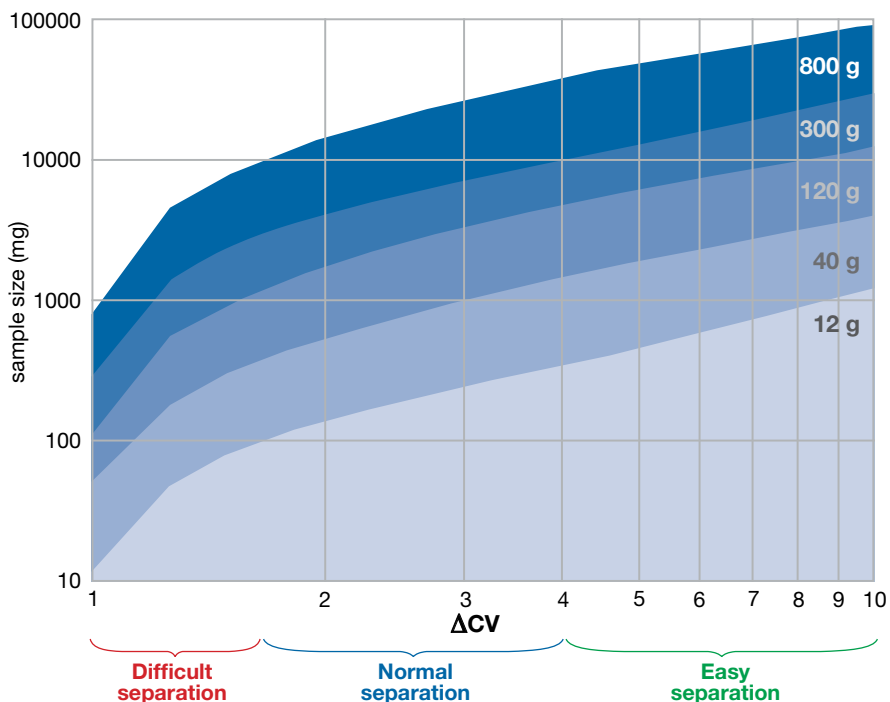
e.g. carotenoids, phthalates, phenones, steroids ...

**Application Examples Reversed Phase:**

e.g. polar organic compounds, polar heterocyclic compounds, peptides

Product Finder

The table on page 300 will help you choose the appropriate flash cartridge for your application. You only need to decide on the particle size and shape and the desired bonding. Calculation of appropriate cartridge size? Subtraction of the reciprocal retention factors yields the ΔCV -value. You can find the most appropriate cartridge size by checking the diagram with the ΔCV -value and the sample size you like to purify.



RF: Retention Factor

CV: Column Volume

CV = 1/RF

$\Delta CV = 1/RF_1 - 1/RF_2$

Ordering Information

Traditional: Irregular (Particle Size 40 – 63 µm)

Product	Size [g]	Pack Qty	Part number
YMC-DispoPackAT SIL	12	24	DPA12SLK06I5224
	40	12	DPA40SLK06I5212
	120	6	DPAA2SLK06I5206
	300	1	DPAC0SLK06I5201
	800	1	DPAH0SLK06I5201
YMC-DispoPackAT NH₂	12	24	DPA12NHK15I5224
	40	12	DPA40NHK15I5212
	120	6	DPAA2NHK15I5206
	300	1	DPAC0NHK15I5201
	800	1	DPAH0NHK15I5201
YMC-DispoPackAT Diol	12	24	DPA12DLK15I5224
	40	12	DPA40DLK15I5212
	120	6	DPAA2DLK15I5206
	300	1	DPAC0DLK15I5201
	800	1	DPAH0DLK15I5201
YMC-DispoPackAT ODS	12	24	DPA12ABK15I5224
	40	12	DPA40ABK15I5212
	120	6	DPAA2ABK15I5206
	300	1	DPAC0ABK15I5201
	800	1	DPAH0ABK15I5201

Premium: Spherical (Particle Size 25 µm)

Product	Size [g]	Pack Qty	Part number
YMC-DispoPackAT SIL-25	12	24	DPA12SLK08S2524
	40	12	DPA40SLK08S2512
	120	6	DPAA2SLK08S2506
	300	1	DPAC0SLK08S2501
	800	1	DPAH0SLK08S2501
YMC-DispoPackAT NH₂-25	12	24	DPA12NHK08S2524
	40	12	DPA40NHK08S2512
	120	6	DPAA2NHK08S2506
	300	1	DPAC0NHK08S2501
	800	1	DPAH0NHK08S2501
YMC-DispoPackAT Diol-25	12	24	DPA12DLK08S2524
	40	12	DPA40DLK08S2512
	120	6	DPAA2DLK08S2506
	300	1	DPAC0DLK08S2501
	800	1	DPAH0DLK08S2501
YMC-DispoPackAT ODS-25	12	24	DPA12ABK08S2524
	40	12	DPA40ABK08S2512
	120	6	DPAA2ABK08S2506
	300	1	DPAC0ABK08S2501
	800	1	DPAH0ABK08S2501