

SOCOREX®

ACURA® ELECTRO PIPETTES



**DURAN
WHEATON
KIMBLE**

Excellence in your hands

SOCOREX®

Acura® *electro* Pipettes



Your Electronic Choice

The Acura® *electro* pipettes are the latest upgrade of a successful line that makes electronic pipetting more versatile, simpler and safer than ever.

The Acura *electro* pipettes offer a unique cost-saving advantage. Once the pipette initial package is purchased, subsequent purchases consist of the appropriate volumetric module or pipette alone. The initial package contains the charging stand that holds up to three pipettes or battery packs.

The microprocessor controlled pipette features intuitive software, eliminating any complicated programming steps. There are six working modes that are easy to access and many volumes to select from. If you are looking for unsurpassed metrological performance and stability, choose the Acura *electro* pipettes.

Product Advantages:

- Optimal ergonomics, lightweight
- Easy, intuitive, self-teaching program
- Large display, reversible for right or left reading
- Swift-interchange battery pack
- Fast charge, long working autonomy
- Adjustable tip ejector* fitting most tips
- Pipetting cycle counter
- 27 interchangeable volumetric modules - all fitting same control unit
- Two-year warranty

*Socorex patented



Product Advantages and Instrument Performance



Micropipettes

- Reduced shaft length and conical end improve driveability
- Easy access to microtubes and microplates
- Optional longer volumetric modules
- Simple conversion by user at any time
- Unsurpassed metrological performance and stability

Macropipettes

- Interchangeable nozzle protection filter
- Adapters for Pasteur pipette and straw tips
- Outstanding accuracy and precision

Multichannel

- Large selection of 8 and 12-channel models
- Lightweight and perfect hand fitting
- Sequential tip ejection
- Also fits any single channel volumetric module

Ordering Information

Initial package includes pipette, charging stand and accessories. Additional pipettes (alone) supplied with individual QC certificate, pipette tips samples and operating instructions.

Cat. No. Initial Package	Cat. No. Pipette Alone	Volume	Division	Min. vol.	Inaccuracy (E%) Mid. Vol.	Max. Vol.	Min. Vol.	Imprecision (CV%) Mid. Vol.	Max. Vol.	Tip Style
Micropipettes Acura® electro 926XS										
W870902-A	W870902	0.1 - 2µL	0.01µL	<± 2.5 % ¹⁾	<± 1.2 %	<± 0.9 %	< 2.5 % ¹⁾	< 1.5 %	< 0.8 %	Ultra 10µL
W870904-A	W870904	0.5 - 10µL	0.05µL	<± 1.2 % ²⁾	<± 0.8 %	<± 0.6 %	< 1.5 % ²⁾	< 0.7 %	< 0.35 %	Ultra 10µL
W870906-A	W870906	0.5 - 10µL	0.05µL	<± 1.2 % ²⁾	<± 0.8 %	<± 0.6 %	< 1.7 % ²⁾	< 0.8 %	< 0.4 %	200µL
W870908-A	W870908	1 - 20µL	0.1µL	<± 1.2 % ²⁾	<± 0.6 %	<± 0.5 %	< 1.2 % ²⁾	< 0.4 %	< 0.3 %	200µL
W870910-A	W870910	2.5 - 50µL	0.25µL	<± 1.0 % ²⁾	<± 0.6 %	<± 0.5 %	< 0.7 % ²⁾	< 0.3 %	< 0.25 %	200µL
W870912-A	W870912	5 - 100µL	0.5µL	<± 1.0 % ²⁾	<± 0.6 %	<± 0.5 %	< 0.7 % ²⁾	< 0.3 %	< 0.2 %	200µL
W870914-A	W870914	10 - 200µL	1.0µL	<± 1.0 % ²⁾	<± 0.6 %	<± 0.4 %	< 0.6 % ²⁾	< 0.2 %	< 0.15 %	200µL
W870916-A	W870916	50 - 1000µL	5.0µL	<± 0.8 % ²⁾	<± 0.5 %	<± 0.4 %	< 0.4 % ²⁾	< 0.15 %	< 0.1 %	1000µL
Macropipettes Acura® electro 936										
W870918-A	W870918	0.1 - 2mL	0.01mL	<± 1.5 % ²⁾	<± 1.0 %	<± 0.5 %	< 0.6 % ²⁾	< 0.3 %	< 0.15 %	2mL
W870920-A	W870920	0.25 - 5mL	0.05mL	<± 1.2 % ²⁾	<± 0.8 %	<± 0.5 %	< 0.6 % ²⁾	< 0.3 %	< 0.15 %	5mL
W870922-A	W870922	0.5 - 10mL	0.05mL	<± 1.0 % ²⁾	<± 0.7 %	<± 0.5 %	< 0.5 % ²⁾	< 0.2 %	< 0.15 %	10mL
8-Channel Pipettes Acura® electro 956										
W870924-A	W870924	0.5 - 10µL	0.05µL	<± 3.5 % ²⁾	<± 1.5 %	<± 1.0 %	< 3.0 % ²⁾	< 0.9 %	< 0.7 %	Ultra 10µL
W870926-A	W870926	2.5 - 50µL	0.25µL	<± 1.0 % ²⁾	<± 0.9 %	<± 0.8 %	< 1.0 % ²⁾	< 0.6 %	< 0.4 %	200µL
W870928-A	W870928	10 - 200µL	1.0µL	<± 0.9 % ²⁾	<± 0.7 %	<± 0.6 %	< 0.6 % ²⁾	< 0.4 %	< 0.25 %	200µL
W870930-A	W870930	20 - 350µL	5.0µL	<± 1.0 % ²⁾	<± 0.8 %	<± 0.6 %	< 0.6 % ²⁾	< 0.4 %	< 0.25 %	350µL
12-Channel Pipettes Acura® electro 956										
W870932-A	W870932	0.5 - 10µL	0.05µL	<± 3.5 % ²⁾	<± 1.5 %	<± 1.0 %	< 3.0 % ²⁾	< 0.9 %	< 0.7 %	Ultra 10µL
W870934-A	W870934	2.5 - 50µL	0.25µL	<± 1.0 % ²⁾	<± 0.9 %	<± 0.8 %	< 1.0 % ²⁾	< 0.6 %	< 0.4 %	200µL
W870936-A	W870936	10 - 200µL	1.0µL	<± 0.9 % ²⁾	<± 0.7 %	<± 0.6 %	< 0.6 % ²⁾	< 0.4 %	< 0.25 %	200µL
W870938-A	W870938	20 - 350µL	5.0µL	<± 1.0 % ²⁾	<± 0.8 %	<± 0.6 %	< 0.6 % ²⁾	< 0.4 %	< 0.25 %	350µL

Performance values obtained in Forward mode with double-distilled water at constant temperature (± 0.5°C) comprised between 20 and 25°C in accordance with ISO 8655.

Performance measured at: ¹⁾ 0.5 µL, ²⁾ 10% of nominal volume

SOCOREX® Acura® *electro* Electronic Pipette

Great Built-in Flexibility

Scroll through mode selection by pressing a single button.



Forward Mode

Aspiration and pipetting of set volume. Suitable for all applications.



Reverse Mode

Aspiration in excess, followed by dosing of set volume. Enhances reproducibility below 20µL. Especially recommended for viscous and foaming liquids.



Stepper Mode

Tip filling and step-by-step distribution. Best suited to aliquot samples.



Dilution Mode

Aspiration of 2 or 3 different volumes for restitution in one shot. An easy way to dilute samples.



Tactile Mode

"Start and stop" liquid measurement, titration and gel loading by simple touch of activation button.



Mixing

"Up and down" liquid flow in the tip / vial.



Natural Ergonomics 1

The Acura® *electro* offers shape, balance and working ergonomics resembling those of a manual instrument. But comfort is greatly improved, thus pipetting and result consistency are outstanding.



Unique "Right or Left" Display Reading 2

Display converts instantly to right or left side reading. All information is clearly presented and visible at a glance during programming, pipetting and calibration steps.



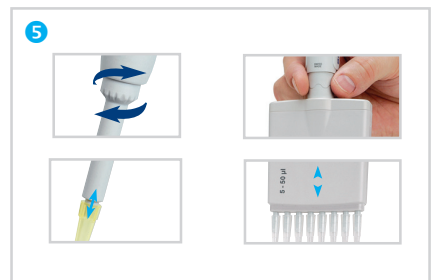
Variable Working Speed 3

Located on the front side, speed selector allows swift change even during the pipetting process. In addition, slow speed access at any time by gentle touch of start button.



Pipetting Cycle Counter 4

A simple double click gives access to the number of pipetting cycles performed since last zeroing.



Tip Ejection - Easier Than Ever 5

Maximal efficiency obtained with a large surface, ergonomically located ejector button. The shaft height adjustment system called Justip™ (4mm span) - controlled by efficient click-stops - allows a wide selection of tips to tightly fit the nozzle.

The multichannel bowed shape ejector head permits effortless, sequential tip ejection.



Nozzle Protection Filter 1

Macro models accommodate a filter protecting instrument against liquid overflow and contamination. Located in the nozzle, it can be removed and changed easily.



Pasteur Pipette - Straw Tip Adapters 2

Optional accessories fit 2mL glass Pasteur pipettes or 5mL straw tip instead of Polypropylene tips.



Optimal Working Position 3

360° rotation of multichannel volumetric modules allows selection of the best working position.



Time Efficient Maintenance 4

Pipette construction limits maintenance to a minimum - no tool required to remove volumetric module. The pipetting cycle counter facilitates maintenance monitoring. Whenever sterilization is needed, volumetric modules can be autoclaved at 121°C/250°F.



Initial Package 5

Recommended when purchasing an Acura® *electro* for the first time, each initial package contains one electronic pipette, QC certificate and operating instructions, charging stand, power supply, additional battery pack, pipette tips samples. Thereafter, additional pipettes can be purchased alone and charged on existing stand.

SOCOREX® Acura® *electro* Electronic Pipette

Interchangeable Volumetric Modules



Calibration 1

Control software gives immediate access to calibration menu. Performance check possible over two or three independent volumes (Vmin, Vmid and Vmax). New settings entered directly from the keyboard. Error message warns of any inaccurate plunger movement.

Compact Charging Rack 2

Space saving stand holds up to three battery packs simultaneously. The ideal charging and storage accessory for spare batteries, available at any time.

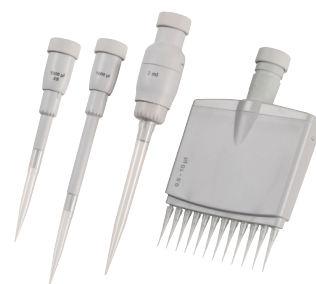
Pipette Charging Stand 3

Stand allows charging and storing up to three electronic pipettes or battery packs simultaneously. Each position is fitted with a red / green charging LED. One stand supplied with every initial package.

Long Working Autonomy 4

NiMH battery pack exchangeable instantly. Fast battery charging (<1.5 hours) and extended working autonomy (>3000 consecutive pipetting cycles). Battery charge level clearly visible on display. Automatic energy saving stand-by when unused.

One control unit fits a choice of 27 volumetric assemblies available separately. This greatly extends working possibilities and makes electronic pipetting affordable to all budgets. Disassembling and re-assembling without any tool contributes towards maximal flexibility. Calibration specificities of extra modules, as set by factory QC or by pipette owner, are retained in instrument memory.



Volumetric Modules

Cat. No.	Volume Range	Tip Style
Single Channel Microvolumes Reduced Shaft Length		
W870012	0.1 - 2µL	Ultra 10µL
W870014	0.5 - 10µL	Ultra 10µL
W870016	0.5 - 10µL	200µL
W870018	1 - 20µL	200µL
W870020	2.5 - 50µL	200µL
W870022	5 - 100µL	200µL
W870024	10 - 200µL	200µL
W870026	50 - 1000µL	1000µL
Regular Shaft Length		
W870112	0.1 - 2µL	Ultra 10µL
W870114	0.5 - 10µL	Ultra 10µL
W870116	0.5 - 10µL	200µL
W870118	1 - 20µL	200µL
W870120	2.5 - 50µL	200µL
W870122	5 - 100µL	200µL
W870124	10 - 200µL	200µL
W870126	50 - 1000µL	1000µL
Single Channel Macrovolumes		
W870128	0.1 - 2mL	2mL
W870130	0.25 - 5mL	5mL
W870132	0.5 - 10mL	10mL
8-Channel Microvolumes		
W870134	0.5 - 10µL	Ultra 10µL
W870136	2.5 - 50µL	200µL
W870138	10 - 200µL	200µL
W870140	20 - 350µL	350µL
12-Channel Microvolumes		
W870142	0.5 - 10µL	Ultra 10µL
W870144	2.5 - 50µL	200µL
W870146	10 - 200µL	200µL
W870148	20 - 350µL	350µL

Accessories


Cat. No.	Description	Qty/Pack
W851342	Nozzle Protection Filters for 2 and 5mL Models, PP Fibers	250
851346	Nozzle protection Filters for 10mL Model, PP Fibers	100
W820023	Pasteur Pipette Adapter Nozzle for 5mL Model	1
W820124	Straw Tip Adapter for 5mL Models	1

Charging Accessories

Cat. No.	Description	Qty/Pack
W820019	Pipette Charging Stand, 3 Charging Positions, Holds Pipettes or Spare Batteries	1
W820020	Compact Charging Stand, 3 Charging Positions, Holds Spare Batteries Only	1
W870001	Spare Battery Pack (NiMH, 4.8V)	1
W870002	Spare Battery Duo Pack (NiMH, 4.8V)	2
W820022-A	Power Supply, 100-240V	1

SOCOREX® Acura® *electro* Electronic Pipette

Interchangeable Volumetric Modules



926 XS micro 936 macro 956 multi

Volume Range
926 XS micro
0.1 - 2µL
0.5 - 10µL
0.5 - 10µL
1 - 20µL
2.5 - 50µL
5 - 100µL
10 - 200µL
50 - 1000µL
936 macro
0.1 - 2mL
0.25 - 5mL
0.5 - 10mL
956 multi
0.5 - 10µL
2.5 - 50µL
10 - 200µL
20 - 350µL



DWK Life Sciences
1501 North 10th Street
Millville, NJ 08332
United States

US & Canada: 800.225.1437
Int'l: 856.825.1100
Fax: 856.825.1368
www.DWK-LifeSciences.com

SOCOREX®

ACURA® MANUAL PIPETTES



**DURAN
WHEATON
KIMBLE**
Excellence in your hands

Acura® manual Pipettes

The Socorex® complete line of liquid handling products offers your lab a single source for superior quality pipettes, tips and accessories. Socorex pipettes which are manufactured in Switzerland are available exclusively by DWK Life Sciences (June 1st, 2017 WHEATON Inc was renamed to DWK Life Sciences) in the United States. Socorex *manual* pipettes meet and exceed users' needs for precision, accuracy and affordability. The Acura 825 and 835 are classic manual pipettes for all applications; the Acura 826 XS is the newest, light weight pipette designed intentionally to be shorter in length to facilitate working in small microtubes. In addition, all Acura *manual* pipettes are designed with optimal ergonomics to help prevent repetitive stress injuries. Specifically, the Acura 826 XS features an ultra-soft plunger which greatly reduces thumb and hand fatigue from long hours of pipetting.

Acura® manual 825

Product Advantages

- Smart and reliable volume adjustment
- Single-handed volume setting
- Precision digital display visible at all times
- Justip™ adjustable tip ejector* fitting most tips
- Swift-set user calibration system*
- Shock, UV-light and autoclaving resistance
- CE Certified IVD 98/79 EEC

* Socorex patented



825

0.1 - 2µL
0.5 - 10µL
1 - 10µL
2 - 20µL
5 - 50µL
10 - 100µL
20 - 200µL
100 - 1000µL

Acura® manual 826 XS

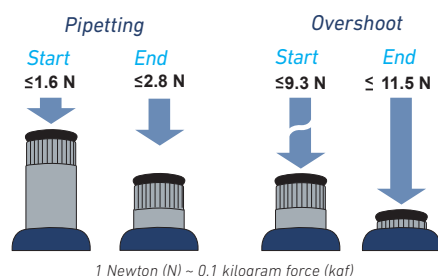
Product Advantages

- Excellent ergonomic shape and size ratio
- New springs and tightness seal for extra-smooth activation
- Reduced weight - lighter than leading brands
- Increased drivability with short, narrow shaft
- Easier to use when working in a fume hood
- Conical shaft end for easy reach in smaller microtubes



826 XS

0.1 - 2µL
0.5 - 10µL
1 - 10µL
2 - 20µL
5 - 50µL
10 - 100µL
20 - 200µL
100 - 1000µL



Extra Smooth Activation

- Unique tightness lip seal and new springs provide for ultra-soft pipetting, reducing hand fatigue while working.
- Forces measured on a 20 - 200µL model, are indicative of very limited finger efforts. Yet, the overshoot stop offers a clear tactile indicator.



Acura® manual Pipettes

Most Comfortable Pipetting ❶

The Acura® manual fits everybody's hand with or without glove. Ergonomic shape, light weight and soft plunger travel care for better comfort.

Ejector Button ❷

Ergonomically positioned, the large surface, soft padded ejector provides for low-pressure activation.

Adjustable Tip Ejection ❸ ❹

Ejector shaft height adjustment system called Justip™ allows a wide selection of tips to tightly fit the nozzle.

Minimum Maintenance / Sterilization ❺

Easy disassembling for thorough cleaning. Sterilization achieved by auto-claving instrument fully assembled (121°C / 250°F).

Instant Calibration ❻ ❼

Swift-set user calibration system - with integrated key and locking mechanism - makes tedious procedures a thing of the past. Easy and precise, it is in full compliance with international standards and recommendations.

Safety Seal ❽

Though easily removed when needed, the switch protection seal is autoclaving resistant.



NEW! Acura® manual 826 XS Pipette Starter Kit (W810200-XS)

Four pipettes, 4 racks of tips plus a stand

Special low price; Ideal for new labs!

(see back cover for a complete list of contents)

Calibration Seal Stickers

Cat. No.	Description	Qty/Case
W810620	Replacement seals	25
W810622	Replacement seals	100

Performance and Ordering Information - Acura® manual 825 and 826 XS Micropipettes

Cat. No.	Volume	Division	Min. Vol.	Inaccuracy (E%) Mid. Vol.	Max. Vol.	Min. Vol.	Imprecision (CV%) Mid. Vol.	Max. Vol.	Weight (g)	Tip Style
Acura 825										
W810300	0.1 - 2µL	0.002µL	< ± 6.0 % ¹⁾	< ± 4.0 %	< ± 2.0 %	< 5.0 % ¹⁾	< 3.3 %	< 1.5 %	88	10µL
W810302	0.5 - 10µL	0.01µL	< ± 2.5 % ²⁾	< ± 1.8 %	< ± 1.0 %	< 1.8 % ²⁾	< 1.2 %	< 0.5 %	88	10µL
W810304	1 - 10µL	0.01µL	< ± 2.5 %	< ± 1.8 %	< ± 1.0 %	< 2.5 %	< 1.6 %	< 0.7 %	88	200µL
W810306	2 - 20µL	0.02µL	< ± 2.5 %	< ± 1.8 %	< ± 1.0 %	< 1.7 %	< 1.1 %	< 0.5 %	88	200µL
W810308	5 - 50µL	0.1µL	< ± 1.5 %	< ± 1.3 %	< ± 1.0 %	< 1.0 %	< 0.7 %	< 0.4 %	90	200µL
W810310	10 - 100µL	0.1µL	< ± 1.5 %	< ± 1.2 %	< ± 0.8 %	< 1.0 %	< 0.6 %	< 0.2 %	92	200µL
W810312	20 - 200µL	0.2µL	< ± 1.5 %	< ± 1.1 %	< ± 0.6 %	< 0.6 %	< 0.4 %	< 0.2 %	90	200µL
W810314	100 - 1000µL	1µL	< ± 1.5 %	< ± 1.0 %	< ± 0.5 %	< 0.5 %	< 0.4 %	< 0.2 %	95	1000µL
Acura 826 XS										
W810300-XS	0.1 - 2µL	0.002µL	< ± 6.0 % ¹⁾	< ± 4.0 %	< ± 2.0 %	< 5.0 % ¹⁾	< 3.3 %	< 1.5 %	84	10µL
W810302-XS	0.5 - 10µL	0.01µL	< ± 2.5 % ²⁾	< ± 1.8 %	< ± 1.0 %	< 1.8 % ²⁾	< 1.2 %	< 0.5 %	84	10µL
W810304-XS	1 - 10µL	0.01µL	< ± 2.5 %	< ± 1.8 %	< ± 1.0 %	< 2.5 %	< 1.6 %	< 0.7 %	85	200µL
W810306-XS	2 - 20µL	0.02µL	< ± 2.5 %	< ± 1.8 %	< ± 1.0 %	< 1.7 %	< 1.1 %	< 0.5 %	85	200µL
W810308-XS	5 - 50µL	0.1µL	< ± 1.5 %	< ± 1.3 %	< ± 1.0 %	< 1.0 %	< 0.7 %	< 0.4 %	86	200µL
W810310-XS	10 - 100µL	0.1µL	< ± 1.5 %	< ± 1.2 %	< ± 0.8 %	< 1.0 %	< 0.6 %	< 0.2 %	87	200µL
W810312-XS	20 - 200µL	0.2µL	< ± 1.5 %	< ± 1.1 %	< ± 0.6 %	< 0.6 %	< 0.4 %	< 0.2 %	86	200µL
W810314-XS	100 - 1000µL	1µL	< ± 1.5 %	< ± 1.0 %	< ± 0.5 %	< 0.5 %	< 0.4 %	< 0.2 %	88	1000µL

Performance values obtained with double-distilled water at constant temperature (± 0.5°C) comprised between 20°C and 25°C in accordance with ISO 8655.

¹⁾ measured at 0.5µL ²⁾ measured at 1µL

Fixed Volume Pipettes available at www.wheaton.com

Acura® manual Pipettes

Acura® manual 835 Macropipettes

Instruments combining high-tech materials with user-friendly ergonomics. Optimal for indoor and outdoor environmental analysis, clinical chemistry and cell culture applications, they offer superior performance and make pipetting safer than ever.

Product Advantages

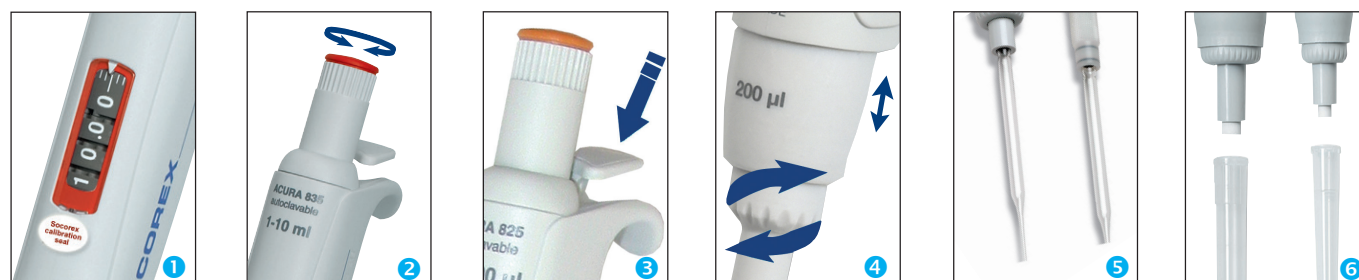
- Smart and reliable volume adjustment
- Single-handed volume setting
- Interchangeable nozzle protection filter
- Justip™ adjustable tip ejector* fitting most tips
- Swift-set user calibration system*
- Shock, UV-light and autoclaving resistance
- Pasteur pipette fitting 2 and 5mL models

* Socorex patented



835

0.2 - 2mL
0.5 - 5mL
1 - 10mL



Display Always Visible ①

Located on the front of the instrument, the display window allows set volume to be visible at all times during pipetting. A comforting reassurance for the user.

Smart and Reliable Volume Adjustment ②

State-of-the-art micrometric volume setting is performed smoothly and precisely by turning push button. Finely machined click-stops and free rotating cap prevent any unwanted volume alteration.

Patented Tip Ejection System ③ ④

Ergonomically positioned, the large surface, soft padded ejector provides for low-pressure activation. In addition, the shaft height adjustment system called Justip™ allows optimal distance setting between ejector and tip.

Pasteur Pipette Adapter ⑤

Adapter nozzles allow fitting of Pasteur pipette on Acura® manual 2 and 5mL models in addition to polypropylene tips. The adapters have two O-rings guaranteeing proper holding and tightness of standard 2mL Pasteur pipettes (Ø 7mm).

Nozzle Protection Filter ⑥

Protection against liquid overflow and contamination.

Performance and Ordering Information - Acura® manual 835 Macropipettes

Cat. No.	Volume	Division	Min. Vol.	Inaccuracy (E%)			Imprecision (CV%)			Tip Style
				Mid. Vol.	Max. Vol.		Min. Vol.	Mid. Vol.	Max. Vol.	
W810315	0.2 - 2mL	0.002mL	< ± 1.5 %	< ± 1.0 %	< ± 0.5 %		< 0.5 %	< 0.3 %	< 0.2 %	2mL
W810316	0.5 - 5mL	0.01mL	< ± 1.5 %	< ± 1.1 %	< ± 0.6 %		< 0.6 %	< 0.5 %	< 0.3 %	5mL
W810318	1 - 10mL	0.01mL	< ± 1.5 %	< ± 0.7 %	< ± 0.5 %		< 0.5 %	< 0.3 %	< 0.2 %	10mL

Performance values obtained with double-distilled water at constant temperature (± 0.5°C) comprised between 20°C and 25°C in accordance with ISO 8655.

Fixed Volume Pipettes available at www.wheaton.com

Acura® manual Pipettes

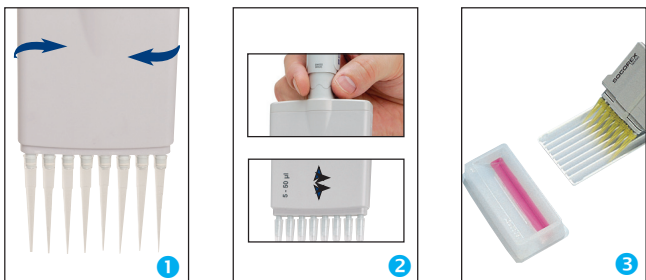
Acura® manual 855 Multichannel Pipette

Built with the users in mind, these pipettes combine high-tech materials with exceptional, user-friendly ergonomics. They extend pipetting possibilities in 96-well microplates and guarantee outstanding performance and results.

Product Advantages

- 8 and 12-channel models up to 350µL
- Light weight and perfect hand fitting
- Precision digital display visible at all time
- Justip™ adjustable tip ejector* fitting most tips
- Swift-set user calibration system*
- 360° rotation of volumetric module

* Socorex patented



Optimal Working Position ①

Revolving over 360°, the volumetric module (lower assembly) helps reach the appropriate hand position.

Adjustable Tip Ejector ②

Position of tip ejector can be adjusted in no time within a 4mm span to perfectly match with tips used. Bowed shape of ejector head guarantees effortless, easy sequential tip removal.

Multichannel Reservoirs ③

Well adapted for multichannel pipettes, the reagent reservoirs offer various shapes and volumes.



8-Channel

- 0.5 - 10µL
- 5 - 50µL
- 20 - 200µL
- 40 - 350µL

12-Channel

- 0.5 - 10µL
- 5 - 50µL
- 20 - 200µL
- 40 - 350µL

Performance and Ordering Information - Acura® manual 855 Multichannel Pipettes

Cat. No.	Volume	Division	Min. Vol.	Inaccuracy (E%)		Max. Vol.	Imprecision (CV%)			Weight (g)	Tip Style
				Mid. Vol.			Min. Vol.	Mid. Vol.	Max. Vol.		
8-Channel											
W810600	0.5 - 10µL	0.01µL	< ± 3.5 % ¹⁾	< ± 2.5 %	< ± 1.5 %	< 3.0 % ¹⁾	< 2.0 %	< 1.0 %	155	10µL	
W810602	5 - 50µL	0.1µL	< ± 1.0 %	< ± 0.9 %	< ± 0.8 %	< 1.0 %	< 0.7 %	< 0.4 %	165	200µL	
W810603	20 - 200µL	0.2µL	< ± 0.9 %	< ± 0.8 %	< ± 0.7 %	< 0.6 %	< 0.5 %	< 0.3 %	165	200µL	
W810604	40 - 350µL	0.4µL	< ± 1.0 %	< ± 0.9 %	< ± 0.8 %	< 0.6 %	< 0.5 %	< 0.3 %	168	350µL	
12-Channel											
W810606	0.5 - 10µL	0.01µL	< ± 3.5 % ¹⁾	< ± 2.5 %	< ± 1.5 %	< 3.0 % ¹⁾	< 2.0 %	< 1.0 %	184	10µL	
W810608	5 - 50µL	0.1µL	< ± 1.0 %	< ± 0.9 %	< ± 0.8 %	< 1.0 %	< 0.7 %	< 0.4 %	199	200µL	
W810609	20 - 200µL	0.2µL	< ± 0.9 %	< ± 0.8 %	< ± 0.7 %	< 0.6 %	< 0.5 %	< 0.3 %	201	200µL	
W810610	40 - 350µL	0.4µL	< ± 1.0 %	< ± 0.9 %	< ± 0.8 %	< 0.6 %	< 0.5 %	< 0.3 %	203	350µL	

Performance values obtained with double-distilled water at constant temperature (± 0.5°C) comprised between 20°C and 25°C in accordance with ISO 8655.

¹⁾ measured at 1µL

Acura® manual Pipette Accessories

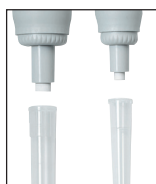
Smartie Caps - Color Coding for Easy Identification



All Acura® pipettes have color-coded button caps for individual, lab or department identifications. Pick among 14 colors or choose the smartie mix for other color combinations.

Cat. No.	Color	Cat. No.	Color
Smarties Button Caps (6/pack)			
W820000	White	W820007	Rose
W820001	Grey	W820008	Pink
W820002	Vanilla	W820009	Purple
W820003	Lemon	W820010	Ice Blue
W820004	Yellow	W820011	Blue
W820005	Orange	W820012	Mint
W820006	Red	W820013	Green
Smartie Assortment (14/pack)			
W820014	Assorted colors (one of each above)		

Nozzle Filters for Macropipettes



Add protection against liquid overflow or pipette contamination. Filters are interchangeable, non-sterile and non-autoclavable. Fits Socorex macro model pipettes.

Cat. No.	Fits	Material	Qty/Bag
W851342	Acura® manual 835, 2 and 5mL	PP fibers	250
851346	Acura® manual 835, 10mL	PP fibers	100

Pasteur Pipette Adapter



PVDF adapter fits pipette nozzle to accommodate standard glass Pasteur pipettes. The adapter has two FPM O-rings guaranteeing proper holding and tightness of standard glass 2mL Pasteur Pipettes.

Cat. No.	Description	Qty / Pack
W820125	For model 835, 2mL	1
W820023	For model 835, 5mL	1

Disposable Glass Pasteur Pipettes

Cat. No.	Length (mm)	Tip Length (mm)	Body Length (mm)	Shelf Pack	Qty/Case
357331	150	45	101	200	1000
357335	230	108	120	200	1000

Silicone Grease for manual Pipettes

Cat. No.	Description	Qty / Pack
W810624	1 gram Tube	5
W810626	10 gram Tube	1

Twister™ Pipette Stand, Model 336



White
Grey
Blue
Green
Yellow
Orange
Red

Cat. No.	Color	Qty / Pack
W870152	Blue	1
W870154	Green	1
W870156	Orange	1
W870158	Grey	1
W870160	Red	1
W870162	White	1
W870164	Yellow	1

Work Stations, Models 337 & 340



337



340






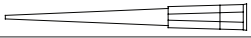

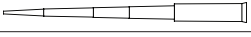
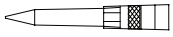


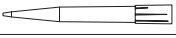
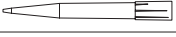


Cat. No.	Color	Qty / Pack
Universal 7 Pipette Work Station, Model 337		
W851354	Ice blue	1
W851356	Mint green	1
W851359	Vanilla yellow	1
W851360	Pastel rose	1
W851361	Light grey	1
3 Pipette Work Station, Model 340		
W851369	Light grey	1

Shelf Pipette Holder, Model 332



Cat. No.	Color	Qty / Pack
Shelf Pipette Holder, Model 332		
W844131	Transparent blue	2
W844132	Transparent blue	4

Pipette Tips Ordering Information

						DNase, RNase Free	Filter	Pyrogen Free	Sterile
Microtips, 10µL									
	Cat No.	Length (mm)	Description	Qty/Case					
	851172	45	Short Tip, 10 racks of 100, Natural	1000	✓				
	851174	76	Long Tip, 4 racks of 200, Natural	800	✓				
	W851239-01	31	10 racks of 96 tips, Natural	960					
	W851239-02	31	10 racks of 96 tips, Natural	960	✓		✓	✓	✓
	W851239-03	31	Bulk pack of 1000 tips, Natural	1000					
Microtips, 100µL									
	Cat No.	Length (mm)	Description	Qty/Case					
	851179-02	54	10 racks of 96 tips, Natural	960	✓	✓	✓	✓	✓
Microtips, 200µL									
	Cat No.	Length (mm)	Description	Qty/Case					
	851246	50	10 racks of 96 tips, Natural	960	✓				
	851247	50	10 racks of 96 tips, Natural	960	✓		✓	✓	✓
	851248	50	Bulk pack of 1000 tips, Natural	1000					
	W851270	49.6	1 - 200 uL Tip, 7 X 52 mm, Ylw, Bvl, Bulk	1000	✓		✓		
	851272	53	10 racks of 96 tips, Yellow	960	✓		✓		
Microtips, 300 / 350µL									
	Cat No.	Length (mm)	Description	Qty/Case					
	851181-01	59	300µL - Bulk pack of 1000 tips, Natural	1000	✓	✓			
	851181-04	59	300µL - 10 racks of 96 tips, Natural	960	✓	✓	✓	✓	✓
	W851189	59	350µL - Bulk pack of 1000 tips, Natural	1000					
	W851190	59	350µL - 10 racks of 96 tips, Natural	960					
Microtips, 1000µL									
	Cat No.	Length (mm)	Description	Qty/Case					
	W851274	75.9	1 - 1000 uL Tip, 10x70mm, Blu, Bvl, Bulk	1000	✓		✓		
	W851275	75.9	1 - 1000 uL Tip, 10 X 70mm, Blu, Bvl, RP	1000	✓		✓		
	851180-01	88	Individually wrapped, Natural	1000	✓	✓	✓	✓	✓
	851180-02	88	10 racks of 100 tips, Natural	1000	✓	✓	✓	✓	✓
Macro tips, 2, 5, 10mL									
	Cat No.	Length (mm)	Description	Qty/Case					
	851355	115	2mL - Bulk pack of 250 tips, Natural	250					
	851358	150	10mL - Bulk pack of 100 tips, Natural	100					
	W835150		Autoclaving Box for 24 - 10mL tips	4					
	W851362	123	5mL - 2 packs of 250 tips, Natural*	500					
	W851363	123	5mL - 2 racks of 50 tips, Natural*	100					

¹⁾ 5mL tip used for 2mL unit up to serial number 17091050 *Graduated

Acura® manual Pipettes

Acura® manual 825 / 835 Triopack

- Three adjustable micropipettes
- Large choice of volume combinations up to 10mL
- Nine different packs



Including: Sampling of pipette tips, silicone grease, Q.C. certificates and operating instructions

Cat. No.	Contents (Micro / Macropipette Models)		
W810319	2µL (0.1 - 2)	10µL (0.5 - 10)	50µL (5 - 50)
W810320	2µL (0.1 - 2)	20µL (2 - 20)	200µL (20 - 200)
W810321	10YµL * (1 - 10)	50µL (5 - 50)	200µL (20 - 200)
W810322	10µL (0.5 - 10)	100µL (10 - 100)	1000µL (100 - 1000)
W810323	10YµL (1 - 10)	100µL (10 - 100)	1000µL (100 - 1000)
W810324	20µL (2 - 20)	200µL (20 - 200)	1000µL (100 - 1000)
W810325	50µL (5 - 50)	200µL (20 - 200)	1000µL (100 - 1000)
W810326	100µL (10 - 100)	1000µL (100 - 1000)	5mL (0.1 - 5)
W810327	1000µL (100 - 1000)	5mL (0.5 - 5)	10mL (1 - 10)

* This pipette must be used with a 200µL pipette tip

Acura® manual 826 XS Pipette Starter Kit



Cat. No.	Contents	Qty
W810200-XS	W810302-XS (0.5 - 10µL)	1
	W810310-XS (0.5 - 10µL)	1
	W810312-XS (0.5 - 10µL)	1
	W810314-XS (0.5 - 10µL)	1
	Twister Blue Pipette Stand	1
	Rack with 10µL tips	1
	Rack with 200µL tips	1
	Rack with 1000µL tips	1

Acura® manual 826 XS TwiXS Pack

- Two adjustable volume pipettes
- Free shelf pipette holder
- Volume combinations up to 1000µL
- Six different packs



Including: Shelf pipette holder, pipette tips samples, silicone grease, Q.C. certificates and operating instructions

Cat. No.	Contents (Micropipettes)	
W810305-TXS	2µL (0.1 - 2)	20µL (2 - 20)
W810307-TXS	10µL (0.5 - 10)	100µL (10 - 100)
W810313-TXS	20µL (2 - 20)	200µL (20 - 200)
W810309-TXS	50µL (5 - 50)	200µL (20 - 200)
W810311-TXS	100µL (10 - 100)	1000µL (100 - 1000)
W810315-TXS	200µL (20 - 200)	1000µL (100 - 1000)



DWK Life Sciences
1501 North 10th Street
Millville, NJ 08332
United States

US & Canada: 800.225.1437
Int'l: 856.825.1100
Fax: 856.825.1368
www.DWK-LifeSciences.com